

# AMERICAN

## V-TWIN PRODUCTS

V - T W I N P R O D U C T S







# DEMAND VANCE & HINES

Forged in the pits of motorcycle drag strips, Terry Vance and Byron Hines envisioned using their passion for the quarter mile to build a company that is a cornerstone of the motorcycle aftermarket. Today Vance & Hines stands for unparalleled quality, class and excellence. Whether racing down the track or riding around town, you too can be part of the experience. If you demand style and performance, demand Vance & Hines.



**vanceandhines**  
**.com**

*Andrew Hines*

**5x**  
**Champion**  
**ANDREW HINES**



**COMP**  
CAMS

**SYN3**  
ENGINE TRANSMISSION  
CHASSIS

**DUNLOP**  
RACING TIRE

**1**  
**PRO**

**MOTOR**  
**HARLEY-DAVIDSON**  
**CYCLES**

**Screamin' Eagle**



ANDREW HINES 5 TIME NHRA® CHAMPION

## 2016 PRODUCTS

8

### 2016 NEW PRODUCTS

The latest products and innovations we are proud to introduce into the Vance & Hines lineup.

20

### HEADERS & SLIP-ONS

For those looking to increase power and sound without breaking the bank, slip-on mufflers are an excellent choice. For Touring models, we also offer aftermarket headers to maximize performance.

52

### FULL SYSTEMS

Full exhaust systems push the envelope of performance a step further by increasing flow, while giving the motorcycle a custom appearance.

76

### BAFFLES/ACCESSORIES

Vance & Hines' collection of quiet and competition baffles allow sound to be altered to the consumer's needs. Header wrap is also available for those looking to cool down riding temperatures.

80

### AIR INTAKE SYSTEMS

In order to take full advantage of a performance exhaust system, the use of a high-flow air intake system is a must.

88

### RACESHOP COMPONENTS

The highest levels of competition require components capable of withstanding the abuse of racing. Raceshop Components bring the products Vance & Hines uses to the everyday rider.

vanceandhines  
.com

**VANCE  
HINES**





# 1 CONNECT

The Fuelpak FP3 has revolutionized fuel management for all new Harley-Davidson models using the HDLAN (CAN Bus) system as well as J1850. Connecting wirelessly by Bluetooth to iPhone or Android Smartphones, Fuelpak FP3 uses Flash technology to recalibrate engine parameters and mapping for exhaust systems and other performance upgrades downloaded from the expansive library of calibrations developed by Vance & Hines.

- **OVER 10,000 PERFORMANCE MAPS**
- **2007-2016 HARLEY COMPATIBLE\***
- **INTELLIGENT AUTOTUNE FEATURE**
- **IMPROVES THROTTLE RESPONSE**

## FUELPAC FP3

YEAR	DESCRIPTION	V&H PART#
2014-2016	Fuelpak FP3 (Touring)	66005
2011-2016	Fuelpak FP3 (Softail) (1)	66005
2012-2016	Fuelpak FP3 (Dyna)	66005
2014-2016	Fuelpak FP3 (Sportster)	66005
2015-2016	Fuelpak FP3 (Street)	66005
2007-2013	Fuelpak FP3 (J1850)(2)	66007

(1) Fits 2014-2016 CVO Models (2) Excludes V-Rod

\*Statement Excludes V-Rod Models

# 2

## MY BIKE RUNS FANTASTIC!

“My bike runs fantastic. Speedo calibration and the room to do future mods along with ease of use and great support.”

**'14 LIMITED** | WASHINGTON

## SIMPLE AND EASY!

“Simple and easy sums up the FP3. In less than 10 minutes your bike is tuned and ready 2 go. No dyno needed.”

**MATTEGLIDE15** | PENNSYLVANIA

“There's two types of people that should be considering this product, anyone who's modified their bike and anyone who hasn't. If you're riding a late model Harley, this product is going to make it perform.”

**LEMMY** | PENNSYLVANIA

(PRODUCT SHOWN ACTUAL SIZE)



# TUNE

# 3

# RIDE



(SMART PHONE NOT INCLUDED)

## I HAVE ALL THE TORQUE & POWER!

“Installed and tuned under 20 Min.  
I have all of the torque and power I  
never even thought I could get out  
of the bike. Highly recommended.”

**BILL\_1202** | ARIZONA

\* Up to 5 HP gains with VO2 Air Intake and FP3 Tuning

## ADDS 5 HP TO STOCK BIKES!\*

- Increased Horsepower and Torque
- Quicker Throttle Response
- Smoother Acceleration
- More Fuel Efficiency
- Improved Low Speed Operation
- Reduced Operating Temperature



**vanceandhines**  
.com



# ELIMINATOR 400 SLIP-ONS

NEW PRODUCT!

Touring

Featuring large 4-inch mufflers finished with race-inspired CNC machined billet end caps, Eliminator 400s are tuned to give Harley-Davidson baggers a deep and aggressive roar.

- CNC Machined Billet End Caps
- Large 4-inch Round Muffler Body
- Fits Saddlebags with Extended Skirts
- Optional Quiet Baffles Available





AVAILABLE IN



## TOURING

YEAR	DESCRIPTION	V&H PART#
1995-2016	Chrome	16703
1995-2016	Black	46703
1995-2016	Chrome / Black Tips	16706

## COMPLETE THE PACKAGE



Page 20

### POWER DUAL HEADERS

Power Dual Headers reduce heat and use a power chamber to increase power over factory headers.



Page 80

### VO2 NAKED WITH SKULLCAP CROWN

VO2 Air Intake systems use a billet venturi and a less restrictive filter element to increase air flow.



Page 96

### FUELPAK

Fuelpaks use fuel maps developed in-house to optimize engine performance based on your unique combination of stock and aftermarket components.

vanceandhines  
.com

# 2-INTO-1 UPSWEEP

Dyna • Sportster

NEW PRODUCT!

New for 2016, this all new 2-1 captures the essence of the urban scene. With a sculpted collector design covering the heart of this dyno tuned 2-into-1, it delivers street focused power and improved cornering clearance.

- CNC Machined Billet End Cap
- Optional Quiet Baffle
- Sculpted Collector Heat Shield





AVAILABLE IN



## DYNA

YEAR	DESCRIPTION	V&H PART#
2006-2016	Chrome	17622
2006-2016	Black	46722

## SPORTSTER

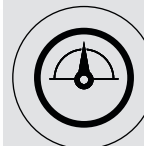
YEAR	DESCRIPTION	V&H PART#
2004-2016	Chrome	17624
2004-2016	Black	47624

### COMPLETE THE PACKAGE



Page 80

**VO2 NAKED AIR WITH STOCK COVER**  
VO2 Air Intake systems use a billet venturi and a less restrictive filter element to increase air flow.



Page 96

### FUELPAK

Fuelpaks use fuel maps developed in-house to optimize engine performance based on your unique combination of stock and aftermarket components.

**vanceandhines**  
.com

# HI-OUTPUT 2-INTO-1 SHORT

NEW PRODUCT!

Softail • Dyna

New for 2016, the Hi-Output family expands the line with an aggressively stout 2-into-1. Engineered to be a compact version of our signature stepped megaphone, the Hi-Output 2-into-1 Short is perfect for the rider that demands the performance of a 2-into-1 and the distinctive sound of the Hi-Output.

- Deep, Throaty Note
- CNC Machined Billet End Cap
- Optional Quiet Baffle





AVAILABLE IN



## SOFTAIL

YEAR	DESCRIPTION	V&H PART#
1986-2016	Chrome	16543
1986-2016	Black	46543

## DYNA

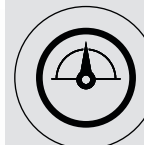
YEAR	DESCRIPTION	V&H PART#
2006-2016	Chrome	16541
2006-2016	Black	46541

## COMPLETE THE PACKAGE



Page 80

**VO2 NAKED AIR WITH STOCK COVER**  
VO2 Air Intake systems use a billet venturi and a less restrictive filter element to increase air flow.



Page 8

### FUELPAK

Fuelpaks use fuel maps developed in-house to optimize engine performance based on your unique combination of stock and aftermarket components.

**vanceandhines**  
.com

# HI-OUTPUT GRENADES

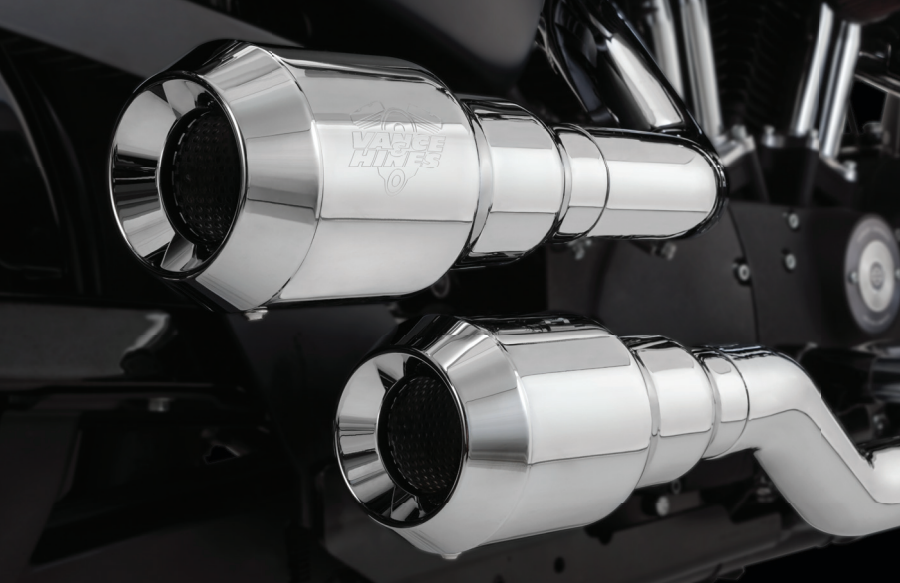
NEW PRODUCT!

Softail • Dyna • Sportster

Hi-Output Grenades break new ground with innovative three step mufflers and tapered CNC machined billet end caps. Staggered for a commanding stance, Hi-Output Grenades have a strong deep tone and are available in chrome/black with three end cap finishes.

- Aggressive Deep Tone
- Innovative Three-Step Muffler Design
- CNC Machined Billet End Caps
- Patent Pending





AVAILABLE IN



## SOFTAIL

YEAR	DESCRIPTION	V&H PART#
2000-2016	Chrome (1)	16846
2000-2016	Chrome / Black Tips (1)	16848
2000-2016	Black (1)	46846
2000-2016	Black / Pearl Nickel Tips (1)	46848
2000-2016	Passenger Footpeg Relocation Bracket	16939
1986-1999	Adaptor Bracket Kit	21898

(1) Foot peg relocation bracket required for passenger footpeg installation

## DYNA

YEAR	DESCRIPTION	V&H PART#
2006-2016	Chrome (2)	16899
2006-2016	Chrome / Black Tips (2)	16896
2006-2016	Black (2)	46899
2006-2016	Black / Pearl Nickel Tips (2)	46896
2006-2016	Passenger Footpeg Relocation Bracket	16941

(2) Foot peg relocation bracket required for passenger footpeg installation

## SPORTSTER

YEAR	DESCRIPTION	V&H PART#
2004-2016	Chrome (3)(4)	16854
2004-2016	Chrome / Black Tips (3)(4)	16852
2004-2016	Black (3)(4)	46854
2004-2016	Black / Pearl Nickel Tips (3)(4)	46852

(3) Passenger foot pegs must be removed (4) Oxygen Sensor Plug Kit (16925) required when used on 2004-2006 models

vanceandhines  
.com

**VANCE  
HINES**





vanceandhines  
.com

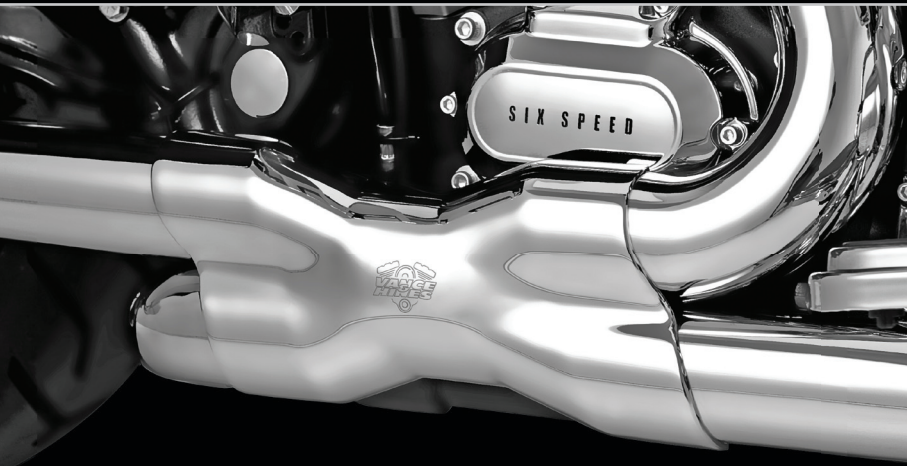
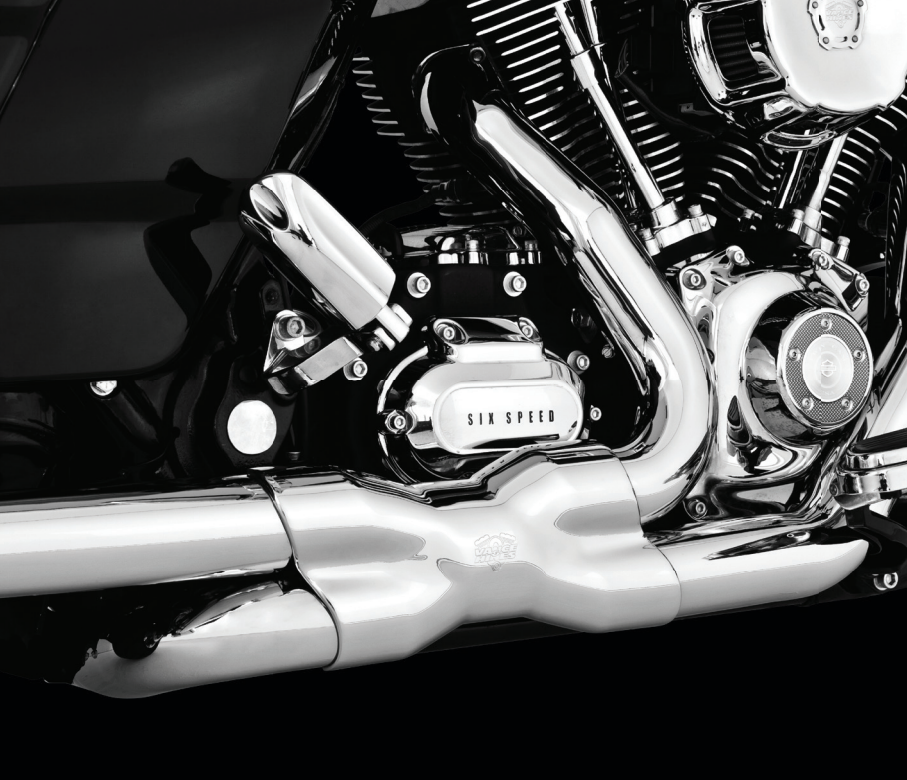
# POWER DUALS

## Touring

The unique look of the contoured heat shields on the Power Duals head pipes elegantly masks the prowess of the Power Chamber crossover that enhances performance over the stock head pipes.

- Power Chamber for Enhanced Performance
- Full Coverage Heat Shields
- Includes Dual Bung Oxygen Sensor Ports (18mm & 12mm)





AVAILABLE IN



## TOURING

YEAR	DESCRIPTION	V&H PART#
2009-2016	Chrome (1)	16832
2009-2016	Black (1)	46832

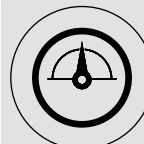
(1) Trike Adaptor Kit (16785) required for use on 2009-2016 Trike models

## COMPLETE THE PACKAGE



Page 80

**VO2 NAKED WITH SKULLCAP CROWN**  
VO2 Air Intake systems use a billet venturi and a less restrictive filter element to increase air flow.



Page 8

### FUELPAK

Fuelpaks use fuel maps developed in-house to optimize engine performance based on your unique combination of stock and aftermarket components.

**vanceandhines**  
.com

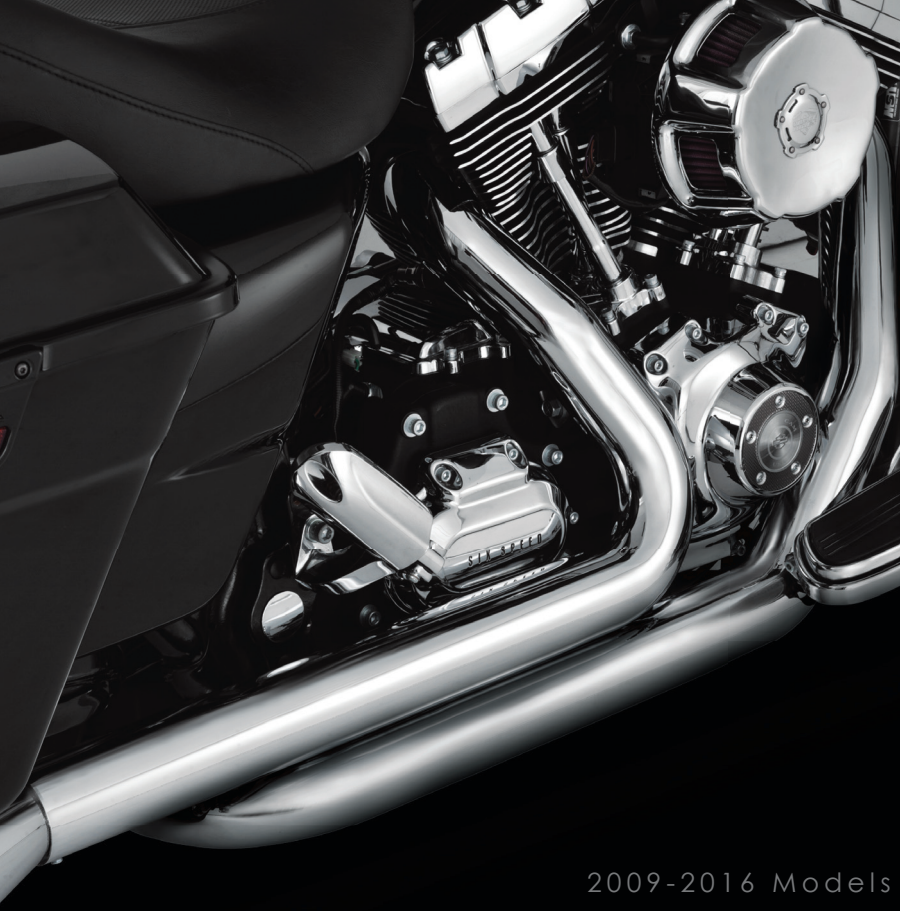
# DRESSER DUALS

## Touring

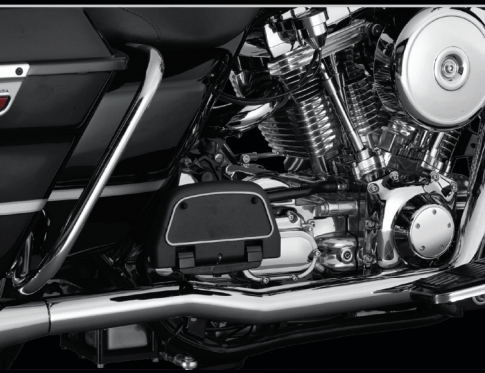
Add the sleek look of true dual head pipes with Dresser Duals, complete with full coverage heat shields and available for all Touring models from 1995 to present.

- Classic True Dual Design
- Full Coverage Heat Shields
- Includes Dual Bung Oxygen Sensor Ports (18mm & 12mm)





2009-2016 Models



1995-2008 Models



1995-2008 Models

AVAILABLE IN



## TOURING

YEAR	DESCRIPTION	V&H PART#
2009-2016	Chrome (1)	16752
2009-2016	Black (1)	46752
1995-2008	Chrome (2)	16799
1995-2008	Black (2)	46799

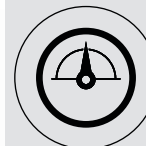
(1) Trike Adaptor Kit (16785) required for use on 2009-2016 Trike models (2) Oxygen sensor plug kit (16925) required when used on 1995-2006 models

## COMPLETE THE PACKAGE



Page 80

**VO2 NAKED WITH SKULLCAP CROWN**  
VO2 Air Intake systems use a billet venturi and a less restrictive filter element to increase air flow.



Page 8

### FUELPAK

Fuelpaks use fuel maps developed in-house to optimize engine performance based on your unique combination of stock and aftermarket components.

**vanceandhines**  
.com

# OVERSIZED 450 SLIP-ONS

## Touring

The OverSized 450 slip-on line also puts out a big deep-toned rumble thanks to its large fiberglass wrapped 2.5-inch perforated core baffles, which can also be tempered down with optional quiet baffles. Available in all chrome, all black or chrome with black end caps.

- Aggressive Throaty Tone
- Massive 4.5-inch Round Mufflers
- CNC Machined Billet End Caps
- Optional Quiet Baffles Available





AVAILABLE IN



## TITAN

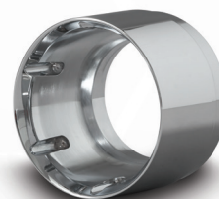
YEAR	DESCRIPTION	V&H PART#
1995-2016	Chrome	16549
1995-2016	Chrome / Black Tips	16551
1995-2016	Black	46549

## RAIDER

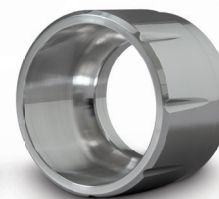
YEAR	DESCRIPTION	V&H PART#
1995-2016	Chrome	16557
1995-2016	Chrome / Black Tips	16559
1995-2016	Black	46557

## DESTROYER

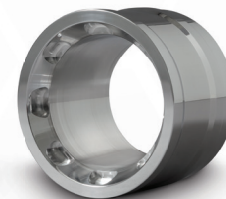
YEAR	DESCRIPTION	V&H PART#
1995-2016	Chrome	16553
1995-2016	Chrome / Black Tips	16555
1995-2016	Black	46553



TITAN



RAIDER



DESTROYER

vanceandhines  
.com

# HI-OUTPUT CARBON SLIP-ONS

## Touring

The Hi-Output Slip-ons' design is singularly focused to yield maximum horsepower and features a deep race-inspired exhaust note.

- Aggressive Stepped Styling
- Handcrafted Carbon End Tip
- Fits Saddlebags with Extended Skirts
- Optional Quiet Insert Available





— AVAILABLE IN —



## TOURING

YEAR	DESCRIPTION	V&H PART#
1995-2016	Chrome Carbon	16465
1995-2016	Black Carbon	46465

## COMPLETE THE PACKAGE



Page 20

### POWER DUAL HEADERS

Power Dual Headers reduce heat and use a power chamber to increase power over factory headers.



Page 85

### VO2 DRAK AIR INTAKE

VO2 Air Intake systems use a billet venturi and a less restrictive filter element to increase air flow.



Page 96

### FUELPAK

Fuelpaks use fuel maps developed in-house to optimize engine performance based on your unique combination of stock and aftermarket components.

**vanceandhines**  
**.com**

# HI-OUTPUT SLIP-ONS

## Touring

The Hi-Output Slip-ons' design is singularly focused to yield maximum horsepower and features a deep race-inspired exhaust note.

- Aggressive Stepped Styling
- Fits Saddlebags with Extended Skirts
- Optional Quiet Insert Available





AVAILABLE IN



## TOURING

YEAR	DESCRIPTION	V&H PART#
1995-2016	Chrome	16455
1995-2016	Black	46759

## COMPLETE THE PACKAGE



Page 20

### POWER DUAL HEADERS

Power Dual Headers reduce heat and use a power chamber to increase power over factory headers.



Page 80

### VO2 NAKED WITH STOCK COVER

VO2 Air Intake systems use a billet venturi and a less restrictive filter element to increase air flow.



Page 96

### FUELPAK

Fuelpaks use fuel maps developed in-house to optimize engine performance based on your unique combination of stock and aftermarket components.

vanceandhines  
.com

# MONSTER OVAL SLIP-ONS

## Touring

With twice the internal volume of standard slip-on mufflers, Monster Ovals produce strong and broad power with a deep rich tone that's ideal for long distance touring.

- Massive 5.5-inch Oval Muffler Body
- Full Coverage Heat Shields
- CNC Machined End Cap





AVAILABLE IN



## TOURING

YEAR	DESCRIPTION	V&H PART#
1995-2016	Chrome / Black Tips	16753
1995-2016	Chrome	16755
1995-2016	Black / Chrome Tips	46755
2009-2013	Chrome (EC Compliant)	16787

## COMPLETE THE PACKAGE



Page 20

### POWER DUAL HEADERS

Power Dual Headers reduce heat and use a power chamber to increase power over factory headers.



Page 84

### VO2 DUKE AIR INTAKE

VO2 Air Intake systems use a billet venturi and a less restrictive filter element to increase air flow.



Page 96

### FUELPAK

Fuelpaks use fuel maps developed in-house to optimize engine performance based on your unique combination of stock and aftermarket components.

**vanceandhines**  
.com

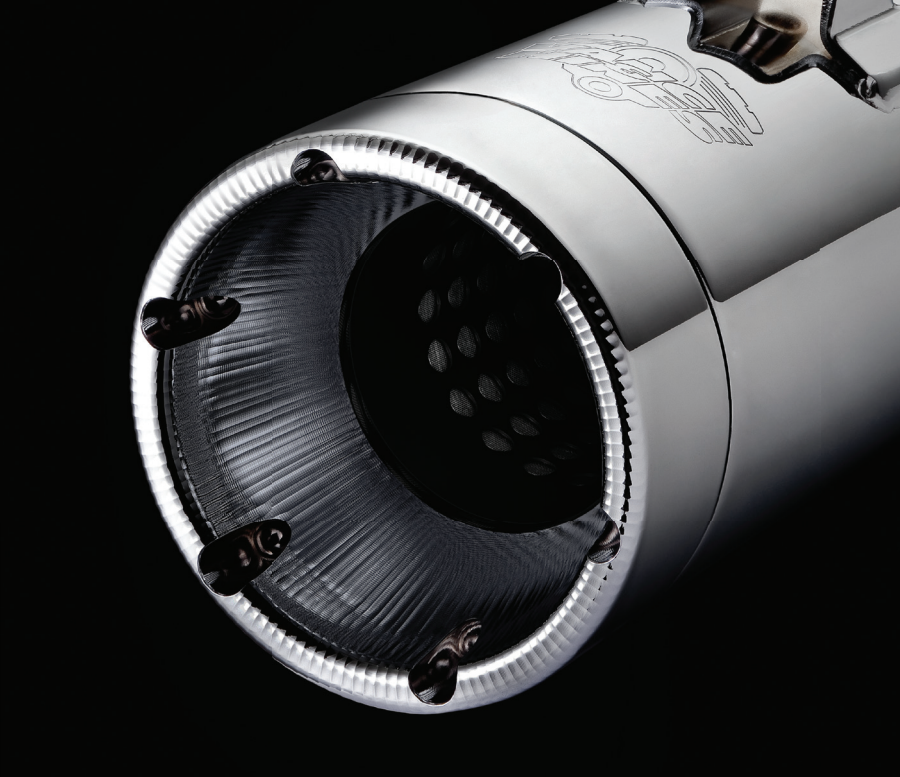
# MONSTER ROUND SLIP-ONS

## Touring

Monster Rounds match the same deep rich tone of Monster Ovals in a 4-inch round that fits perfect on CVO Dressers with extended saddlebag skirts.

- Full Coverage Heat Shields
- CNC Machined End Cap
- Fits Saddlebags with Extended Skirts





AVAILABLE IN



## TOURING

YEAR	DESCRIPTION	V&H PART#
1995-2016	Chrome	16773
1995-2016	Black	46773

COMPLETE THE PACKAGE



Page 20

### POWER DUAL HEADERS

Power Dual Headers reduce heat and use a power chamber to increase power over factory headers.



Page 80

### VO2 NAKED WITH SKULLCAP CROWN

VO2 Air Intake systems use a billet venturi and a less restrictive filter element to increase air flow.



Page 8

### FUELPAK

Fuelpaks use fuel maps developed in-house to optimize engine performance based on your unique combination of stock and aftermarket components.

vanceandhines  
.com

# TWIN SLASH ROUND SLIP-ONS

## Touring

Twin Slash Rounds take the classic look of a round slip-on and add a touch of distinction with a twin slash end treatment, at an unbeatable price.

- Best Value Touring Slip-on
- Large 4-inch Round Muffler Body
- Signature Twin Slash End Treatment
- Optional Quiet Insert Available





AVAILABLE IN



## TOURING

YEAR	DESCRIPTION	V&H PART#
1995-2016	Chrome	16763
2010	Chrome (2-into-1 Slip-On)	16777

## COMPLETE THE PACKAGE



Page 22

### DRESSER DUAL HEADERS

Dresser Dual Head Pipes reduce heat and give the appearance of classic true duals with improved flow.



Page 80

### VO2 NAKED WITH SKULLCAP CROWN

VO2 Air Intake systems use a billet venturi and a less restrictive filter element to increase air flow.



Page 8

### FUELPAK

Fuelpaks use fuel maps developed in-house to optimize engine performance based on your unique combination of stock and aftermarket components.

**vanceandhines**  
**.com**

# MONSTER SQUARED SLIP-ONS

## Touring

Monster Squared slip-ons carry forward the rich deep tone and performance of Monster Ovals in a bold new configuration, highlighted by bold angular lines and massive hexagonal machined end caps.

- Oversized Angular Design
- Full Coverage Heat Shields
- 6.25-inch Machined Billet End Caps



## TOURING

YEAR	DESCRIPTION	V&H PART#
1995-2016	Chrome	16851
1995-2016	Black	46851

— AVAILABLE IN —



# TWIN SLASH OVAL SLIP-ONS

Touring



The Twin Slash look is available with the classic Vance & Hines Oval slip-on, a favorite among touring riders for over ten years.

- Best Value Oval Slip-on
- Signature Twin Slash End Treatment
- Large 4.5-inch Oval Muffler Body
- Optional Quiet Baffle Available



## TOURING

YEAR	DESCRIPTION	V&H PART#
1995-2016	Chrome	16767

— AVAILABLE IN —

vanceandhines  
.com

# TWIN SLASH MONSTER SLIP-ONS

## Touring

The Twin Slash Monster substitutes the billet end caps of Monster Ovals for the twin slash style, but with all the power and smooth deep tone of the original.

- Signature Twin Slash End Treatment
- Massive 5.5-inch Oval Muffler Body
- Full Coverage Heat Shields
- EPA Sound Compliant Version Available



## TOURING

YEAR	DESCRIPTION	V&H PART#
1995-2016	Chrome	16765
2009-2016	Chrome (EPA Compliant)	16781

— AVAILABLE IN —

# BLACKOUT ROUND SLIP-ONS

Touring



Blackout Round slip-ons are the best choice for a stealth no-nonsense look, and when paired with Dresser Duals Black, form a truly all-black Touring exhaust system.

- CNC Machined End Cap
- 4-inch Round Muffler Body
- Optional Quiet Insert Available



## TOURING

YEAR	DESCRIPTION	V&H PART#
1995-2016	Black	46751

— AVAILABLE IN —



vanceandhines  
.com

# FISHTAIL 3-INCH SLIP-ONS

## Touring

Meticulously formed, Fishtail Slip-ons are excellent choices for capturing a nostalgic look on a classic FL touring bike.

- Optional Quiet and Competition Baffles
- 3-inch Round with Fishtail End Cap
- Classic Fishtail Styling



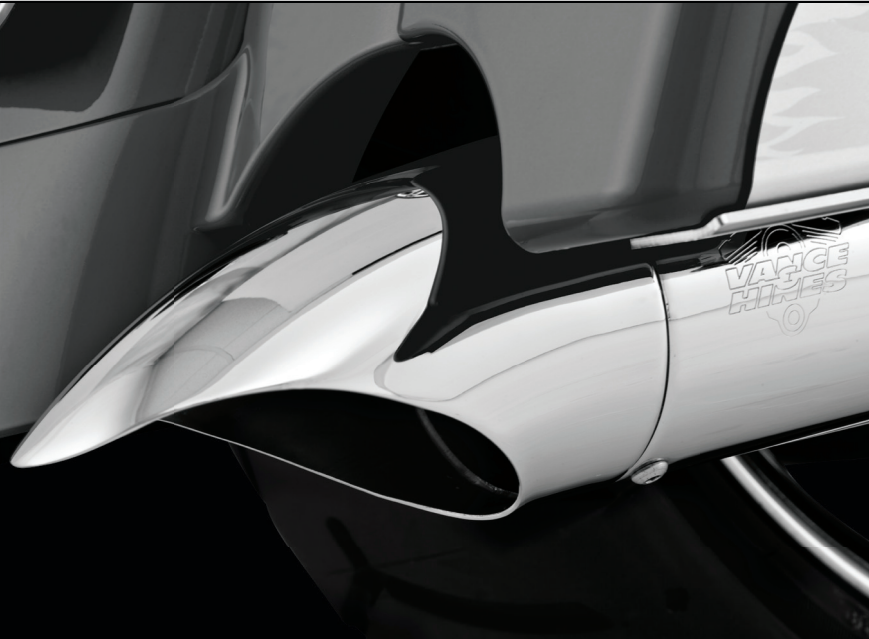
## TOURING

YEAR	DESCRIPTION	V&H PART#
1995-2016	Chrome	16775

— AVAILABLE IN —

# TURNDOWN SLIP-ONS

Touring



Turndown Slip-ons feature large 4-inch muffler bodies with the Vance & Hines signature turndown end treatment compatible with CVO drop skirt bags. An all new maintenance-free baffle is used that also minimizes heat discoloration.

- Nostalgic Styling
- 4-inch Round with Scalloped Turndown
- Optional Quiet Insert Available



## TOURING

YEAR	DESCRIPTION	V&H PART#
1995-2016	Chrome	16761

AVAILABLE IN

vanceandhines  
.com

# TRIKE DELUXE SLIP-ONS

## Tri Glide

Exclusively designed for the Harley-Davidson Tri Glide Ultra Classic and Street Glide Trike, the Trike Deluxe Slip-Ons improve ground clearance and provide a deep rich stereo friendly sound.

- Designed for Harley-Davidson Trike Models
- Monster Oval Sound & Performance
- Improved Ground Clearance Over Stock Mufflers
- Rolled Stainless Steel End Treatment





— AVAILABLE IN —



## TOURING

YEAR	DESCRIPTION	V&H PART#
2009-2016	Polished Tip	16789
2009-2016	Trike Adaptor Kit	16785



### TRIKE ADAPTOR KIT

This kit extends the standard Vance & Hines 2009-2016 Touring head pipes to allow for proper fitment on your Harley Tri Glide.

— ACCESSORIES —



vanceandhines  
.com

# TWIN SLASH ROUND SLIP-ONS

## Free Wheeler

Specially designed for the Harley-Davidson Freewheeler with a shorter length cut to fit the compact size of the Freewheeler chassis, Twin Slash Round Slip-ons give the Freewheeler a nice throaty rumble and can be matched with Vance & Hines Power Dual or Dresser Dual head pipes.

- 4-inch Round Mufflers
- Signature Twin Slash End Treatment
- Optional Quiet Inserts





— AVAILABLE IN —



## TOURING

YEAR	DESCRIPTION	V&H PART#
2015-2016	Chrome (1)	16798
2015-2016	Trike Adaptor Kit	16785

(1) Requires trike adapter kit 16785 when paired with aftermarket headers



### TRIKE ADAPTOR KIT

This kit extends the standard Vance & Hines 2015-2016 Touring head pipes to allow for proper fitment on your Harley Tri Glide.

— ACCESSORIES —



vanceandhines  
.com

# TWIN SLASH 3-INCH SLIP-ONS

Softail • Dyna • Sportster

Twin Slash 3-inch Slip-Ons are an excellent choice for a quick and inexpensive upgrade to customize the look, sound and performance of your Harley.

- Full Coverage Heat Shields
- Signature Twin Slash End Treatment
- Quiet and Competition Baffles Available





— AVAILABLE IN —



## SOFTAIL

YEAR	DESCRIPTION	V&H PART#
2007-2016	Chrome (1)	16835
2007-2016	Chrome (2)	16841
2007-2016	Chrome (3)	16843
2011-2013	Chrome (4)	16847
2007-2016	Black (2)	46841
2007-2016	Black (3)	46843
2011-2013	Black (4)	46847

(1) Fits FXST Standard, FXSTC Custom, FLSTC Heritage Classic, FXSTB Night Train, FXCW Rocker, FXSB Breakout (2) Fits FLSTN Deluxe, FLS Slim, FLSTSB Cross Bones (3) Fits FLSTM Fatboy, FLSTFB Fatboy Lo, FXSTD Deuce (4) Fits FXS Blackline

## DYNA

YEAR	DESCRIPTION	V&H PART#
1991-2016	Chrome (5)	16837
2008-2016	Chrome (6)	16845
1991-2016	Black (5)	46837
2008-2016	Black (6)	46845

(5) Does not fit FXDF Fat Bob, 2010-2016 FXDWG Wide Glide, 2014-2016 FXDL Low Rider or FLD Switchback (6) Fits FXDF Fat Bob, 2010-2016 FXDWG Wide Glide

## SPORTSTER

YEAR	DESCRIPTION	V&H PART#
2014-2016	Chrome	16861
2004-2013	Chrome	16839
2014-2016	Black	46861
2004-2013	Black	46839

vanceandhines  
.com

# STRAIGHTSHOTS HS SLIP-ONS

Softail • Dyna • Sportster

Straightshots HS Slip-Ons are the quickest way to pick up performance and get big bike sound without breaking the bank.

- Full Coverage Heat Shields
- Optional Quiet Baffle Available
- 2.5-inch Round with Straight-Cut End Treatment



## SOFTAIL

YEAR	DESCRIPTION	V&H PART#
2007-2016	Chrome (1)	16831
2007-2016	Chrome (2)(3)	16833
2007-2016	Chrome (4)	16827
2000-2006	Chrome (5)	16821

(1) Fits FLSTC Heritage, FXST Softail Standard, FXSTB Night Train, FXSTC Softail Custom, FXCW Rocker, FXCWC CVO Springer Softail (2) Fits FLSTN Deluxe, FLS Slim, FLSTSB Crossbones, FXSB Breakout (3) Does not fit FLSTNSE CVO Deluxe (4) Fits FLSTF Fat Boy, FLSTFB Fat Boy Lo/Special, 2007-2008 FXSTSE CVO Springer Softail (5) Fits FLSTC Heritage, FXST Softail Standard, FXSTB Night Train

## DYNA

YEAR	DESCRIPTION	V&H PART#
1991-2016	Chrome (6)	16823

(6) Does not fit 2008-2016 FXDF Fat Bob, 2010-2016 FXDWG Wide Glide, 2014-2016 FXDL Low Rider or FLD Switchback

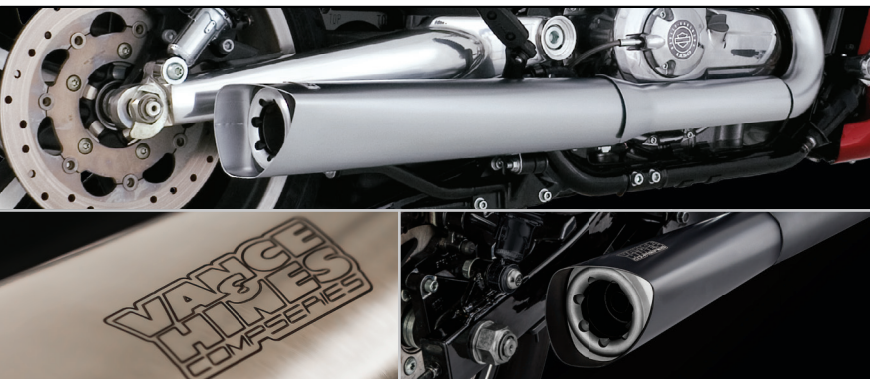
## SPORTSTER

YEAR	DESCRIPTION	V&H PART#
2014-2016	Chrome	16863
2004-2013	Chrome	16819

AVAILABLE IN

# COMPETITION SERIES SLIP-ON

V-Rod • Street



The Competition Series Slip-Ons are a direct slip-fit to the OEM head pipes, and with a matching pearl nickel or matte black finish, they add an aggressive angular look with an equally aggressive sound.

- Lightweight Stainless Steel Construction
- Slip-fit to OEM Head Pipes
- Optional Quiet Insert Available

## V-ROD

YEAR	DESCRIPTION	V&H PART#
2009-2016	Pearl Nickel (V-Rod Muscle)	75-110-14

## STREET

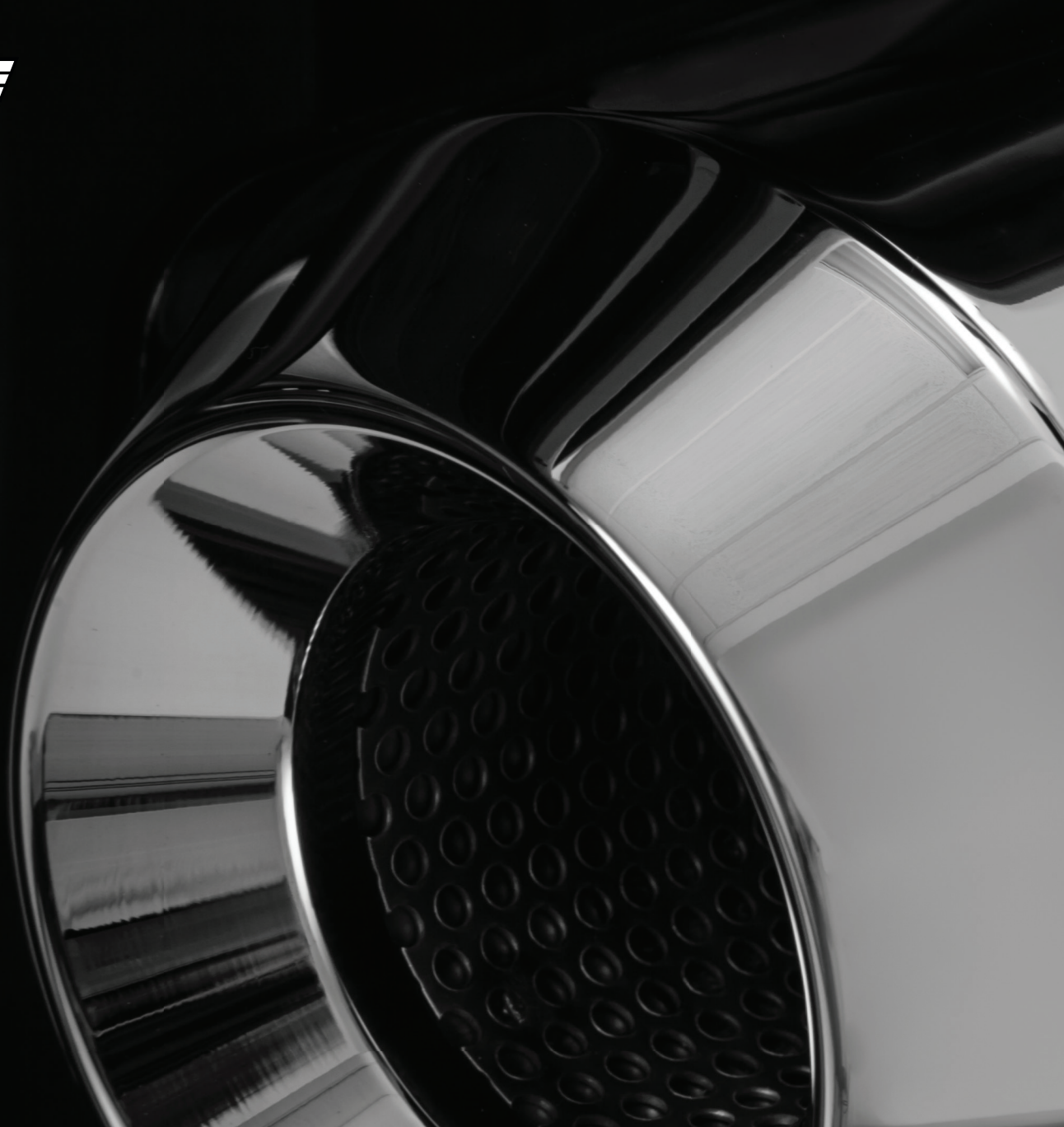
YEAR	DESCRIPTION	V&H PART#
2014-2016	Black	47937

AVAILABLE IN



vanceandhines  
.com

**VANCE  
HINES**





[vanceandhines.com](http://vanceandhines.com)

# SUPER RADIUS

Touring • Softtail • Dyna

Super Radius brings a deeper and richer tone to the custom-styled exhaust, engineered for today's larger capacity big twin engines to get solid performance and just the right sound.

- Bold Custom Bike Styling
- Deeper Tone Compared to Big Radius 2-into-2
- Full Coverage Heat Shields





— AVAILABLE IN —



## TOURING

YEAR	DESCRIPTION	V&H PART#
2007-2016	Chrome	26063
2007-2016	Black	46063

## SOFTAIL

YEAR	DESCRIPTION	V&H PART#
1986-2016	Chrome	26051
1986-2016	Black	46051

## DYNA

YEAR	DESCRIPTION	V&H PART#
2006-2016	Chrome	26053
2006-2016	Black	46053

— ACCESSORIES —



vanceandhines  
.com

# BIG RADIUS 2-INTO-2

Touring • Softail • Dyna • Sportster

The original game changer, Big Radius 2-into-2 brings together radical custom bike styling with precision quality features like full coverage heat shields and dyno-tuned baffles.

- Custom Bike Styling
- Radius Curved Louvered Baffles
- Full Coverage Heat Shields





AVAILABLE IN



## TOURING

YEAR	DESCRIPTION	V&H PART#
2010-2016	Chrome	26057
2009	Black (1)	46047
2007-2008	Chrome	26039
1999-2006	Chrome	26045

(1) Fits 2009-2016 Touring using aftermarket wideband sensors

## SOFTAIL

YEAR	DESCRIPTION	V&H PART#
2012-2016	Chrome	26059
2012-2016	Black	46059
2013-2016	Chrome (2)	26065
2013-2016	Black (2)	46065
2008-2011	Chrome (Rocker)	26043
1986-2011	Chrome (3)	26029
1986-2011	Black (3)	46029

(2) Fits FXSB Breakout and FXSBSE CVO Breakout (3) Oxygen sensor plug kit (16925) required when used on 1986-2006 models

## DYNA

YEAR	DESCRIPTION	V&H PART#
2012-2016	Chrome	26061
2012-2016	Black	46061
2006-2011	Chrome	26013
2006-2011	Black	46013
1991-2005	Chrome	26007

## SPORTSTER

YEAR	DESCRIPTION	V&H PART#
2014-2016	Chrome	26067
2014-2016	Black	46067
2004-2013	Chrome (4)	26055
2004-2013	Black (4)	46055

(4) Oxygen Sensor Plug Kit (16925) required when used on 2004-2006 models

vanceandhines  
.com

# SHORTSHOTS STAGGERED

Softail • Dyna • Sportster

An unparalleled value, Shortshots Staggered deliver hot rod sound and performance wrapped in full-length heat shields, at a price rivaling most slip-ons.

- Signature Twin Slash End Treatment
- Full Coverage Heat Shields
- Optional Quiet Baffle Available





AVAILABLE IN



## SOFTAIL

YEAR	DESCRIPTION	V&H PART#
2012-2016	Chrome	17225
2012-2016	Black	47225
1986-2011	Chrome	17221
1986-2011	Black (1)	47221
1986-2006	Chrome (1)(2)	17209

(1) Oxygen sensor plug kit (16925) required when used on 1986-2006 models  
(2) Original Shortshots

## DYNA

YEAR	DESCRIPTION	V&H PART#
2012-2016	Chrome	17227
2012-2016	Black	47227
2006-2011	Chrome	17217
2006-2011	Black	47217
1991-2005	Chrome	17213
1991-2005	Chrome (3)	17205
1987-1994	Chrome (4)	17207

(3) Original Shortshots (4) Original Shortshots, Fits FXR

## SPORTSTER

YEAR	DESCRIPTION	V&H PART#
2014-2016	Chrome	17229
2014-2016	Black	47229
2004-2013	Chrome (5)	17219
2004-2013	Black (5)	47219
1999-2003	Chrome	17223

(5) Oxygen Sensor Plug Kit (16925) required when used on 2004-2006 models

vanceandhines  
.com

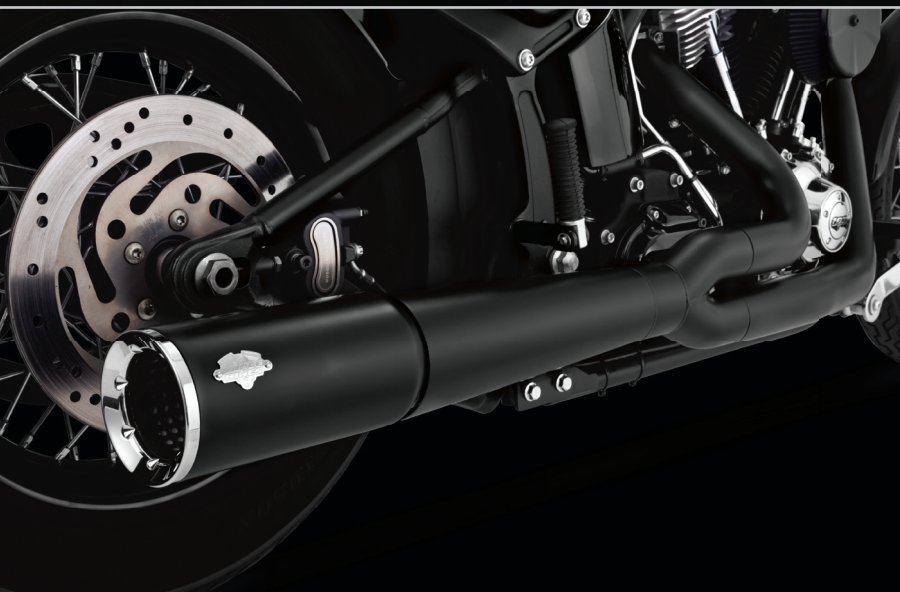
# PRO PIPE

Touring • Softail • Dyna

Featuring a distinctive stepped megaphone design, this latest evolution in the Vance & Hines 2-into-1 performance legacy improves performance over its predecessors .

- Broad/Usable Torque Increase
- Stepped Headers, Large Merge Collector
- Quiet and Competition Baffles Available
- 4.5-inch Muffler Body At Exit





AVAILABLE IN



## TOURING

YEAR	DESCRIPTION	V&H PART#
2010-2016	Chrome	17559
2010-2016	Black	47561
2009	Chrome (1)	17539
1999-2008	Chrome (2)	17557
1999-2008	Black (2)	47557

(1) Fits 2009-2016 Touring using aftermarket wideband sensors (2) Oxygen Sensor Plug Kit (16925) required when used on 1999-2006 models

## SOFTAIL

YEAR	DESCRIPTION	V&H PART#
2012-2016	Chrome	17571
2012-2016	Black	47527
1986-2011	Chrome (3)(4)	17547
1986-2011	Black (3)(4)	47547

(3) Oxygen sensor plug kit (16925) required when used on 1986-2006 models

(4) Does not fit FXCW Rocker, FXCWC Rocker C or 2009 FXSTSSE Springer Softail

## DYNA

YEAR	DESCRIPTION	V&H PART#
2012-2016	Chrome	17569
2012-2016	Black	47525
2012-2016	Chrome (6)	17573
2006-2011	Chrome	17551
2006-2011	Black	47551
1991-2005	Chrome (7)	17523

(6) Fits Dyna Switchback (7) Pro Pipe HS

vanceandhines  
.com

# BIG RADIUS 2-INTO-1

Softail • Dyna

At the intersection of radical style and superior power, Big Radius 2-into-1 plays the part with finely sculpted lines and a race engineered 2-into-1 design.

- Radius Style, 2-into-1 Performance
- Broad/Usable Torque Increase
- Full Coverage Heat Shields





AVAILABLE IN



## SOFTAIL

YEAR	DESCRIPTION	V&H PART#
2012-2016	Chrome	28019
2012-2016	Black	48019
1986-2011	Chrome (1)(2)(3)(4)	28001
1986-2011	Black (1)(2)(3)(4)	48001

(1) Oxygen Sensor Plug Kit (16925) required when used on 1986-2006 models (2) Does not fit bikes with saddlebags that mount to the passenger foot peg (3) 1986-1999 models passenger foot pegs must be removed (4) Does not fit FXCW Rocker, FXCWC Rocker C or 2009 FXSTSSE Springer Softail

## DYNA

YEAR	DESCRIPTION	V&H PART#
2012-2015	Chrome (5)	28021
2012-2015	Black (5)	48021

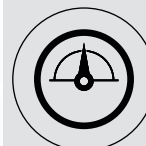
(5) Requires removal of passenger foot pegs

## COMPLETE THE PACKAGE



Page 80

**VO2 NAKED WITH SKULLCAP CROWN**  
VO2 Air Intake systems use a billet venturi and a less restrictive filter element to increase air flow.



Page 8

### FUELPAK

Fuelpaks use fuel maps developed in-house to optimize engine performance based on your unique combination of stock and aftermarket components.

**vanceandhines**  
.com

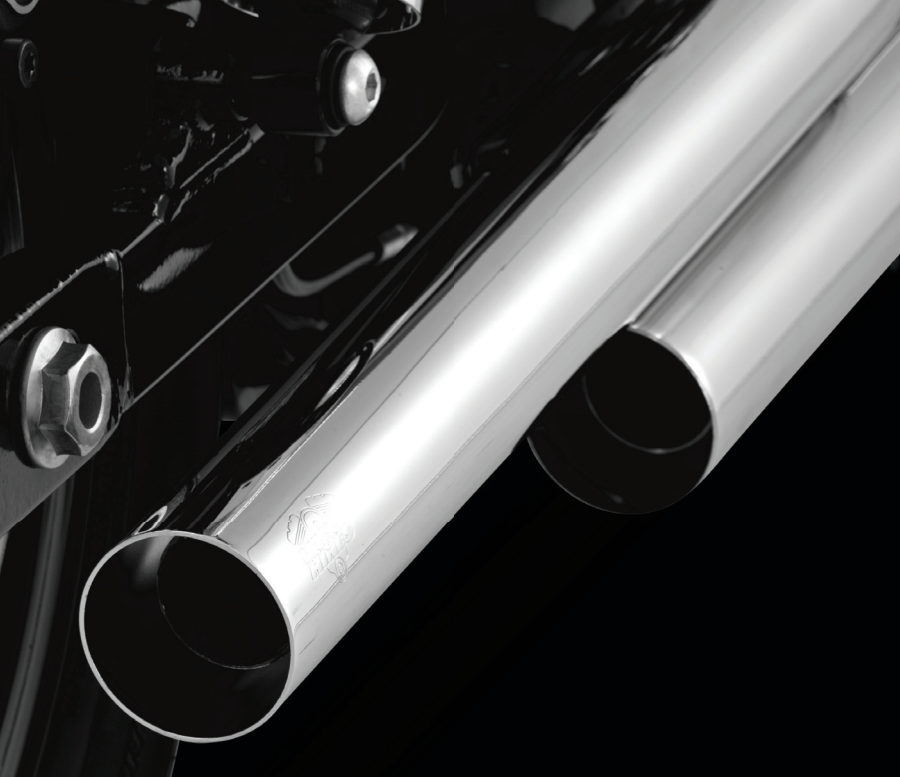
# STRAIGHTSHOTS

Softail • Dyna • Sportster

The staggered dual layout of Straightshots never falls out of fashion, but it's never been better with full-length one piece heat shields for a clean and seamless style.

- Classic Staggered Drag Pipe Styling
- Full Coverage Heat Shields
- Optional Quiet Baffle Available





— AVAILABLE IN —



## SOFTAIL

YEAR	DESCRIPTION	V&H PART#
1986-2011	Chrome (1)	17817
(1) Oxygen Sensor Plug Kit (16925) required when used on 1986-2006 models		

## DYNA

YEAR	DESCRIPTION	V&H PART#
2006-2011	Chrome	17819
1991-2005	Chrome (2)	16805
(2) Original Straightshots		

## SPORTSTER

YEAR	DESCRIPTION	V&H PART#
2004-2013	Chrome (3)	17821
1986-2003	Chrome (Mid Controls) (4)	16809
1999-2003	Chrome (Forward Controls) (4)	16811
(3) Oxygen Sensor Plug Kit (16925) required when used on 2004-2006 models		
(4) Original Straightshots		

— ACCESSORIES —



vanceandhines  
.com

# BIG SHOTS STAGGERED

Softail • Dyna

Big Shots Staggered give you the best of both worlds, long and low 2-into-2 style pipes with 2-into-1 performance thanks to the Vance & Hines Power Chamber hidden crossover.

- Power Chamber Crossover Technology
- Full Coverage Heat Shields
- Optional Quiet Baffle Available



## SOFTAIL

YEAR	DESCRIPTION	V&H PART#
2012-2016	Chrome	17933
2012-2016	Black	47933
1986-2011	Chrome (1)(2)	17921
1986-2011	Black (1)(2)	47921

(1) Oxygen Sensor Plug Kit (16925) required when used on 1986-2006 models

(2) Does not fit FXCW Rocker, FXCWC Rocker C or 2009 FXSTSSE Springer Softail

## DYNA

YEAR	DESCRIPTION	V&H PART#
2012-2016	Chrome	17935
2012-2016	Black	47935
2006-2011	Chrome	17919
2006-2011	Black	47919
1991-2005	Chrome	17911

AVAILABLE IN

# BIG SHOTS LONG/LONGSHOTS

Softail / Dyna



The nostalgic look of Big Shots Long is especially well suited for the Heritage Softail Classic, where the length of the exhaust system runs beneath the saddlebag to the edge of the rear wheel.

- Power Chamber Crossover Technology
- Full Coverage Heat Shields
- Optional Quiet Baffle Available



## SOFTAIL

YEAR	DESCRIPTION	V&H PART#
2012-2016	Chrome	17823
1986-2011	Chrome (3)	17923
1986-2006	Chrome (4)	17813
1986-2006	Chrome (5)	17811

(3) Oxygen Sensor Plug Kit (16925) required when used on 1986-2006 models  
(4) Longshots HS (5) Longshots Original

## DYNA

YEAR	DESCRIPTION	V&H PART#
1991-2005	Chrome (6)	17805

(6) Longshots Original

AVAILABLE IN

vanceandhines  
.com

# BIG SHOT DUALS

## Touring

Big Shot Duals are the ultimate complete system for FL models with a sleek appearance thanks to long one-piece heat shields finished with CNC machined end caps.

- Classic True Dual Design
- Full Coverage Heat Shields
- Optional Quiet Baffle Available
- Fishtail and Slash-Cut Tips Optional



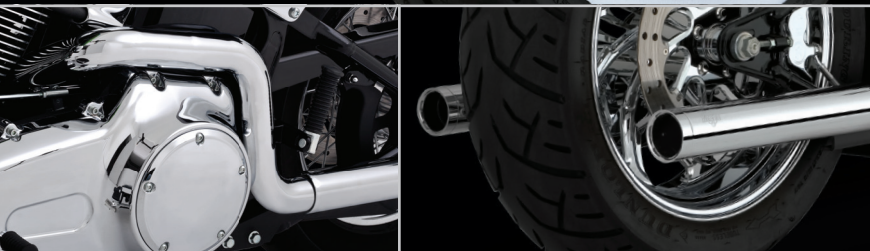
## TOURING

YEAR	DESCRIPTION	V&H PART#
2010-2013	Chrome	17931
2009	Chrome	17927
2007-2008	Chrome	17925
1995-2006	Chrome	17917

AVAILABLE IN

# SOFTAIL DUALS

Softail



Enhance the nostalgic look of a Springer Softail Classic or any other Softail model with Softail Duals' true dual head pipes and matched straight-cut slip-ons.

- Classic True Dual Design
- Full Coverage Heat Shields
- Optional Quiet Baffle Available
- Fishtail and Slash-Cut Tips Optional



## SOFTAIL

YEAR	DESCRIPTION	V&H PART#
2012-2016	Chrome	16893
1997-2011	Chrome (2)	16793

(2) Oxygen Sensor Plug Kit (16925) required when used on 1986-2006 models

AVAILABLE IN

vanceandhines  
.com

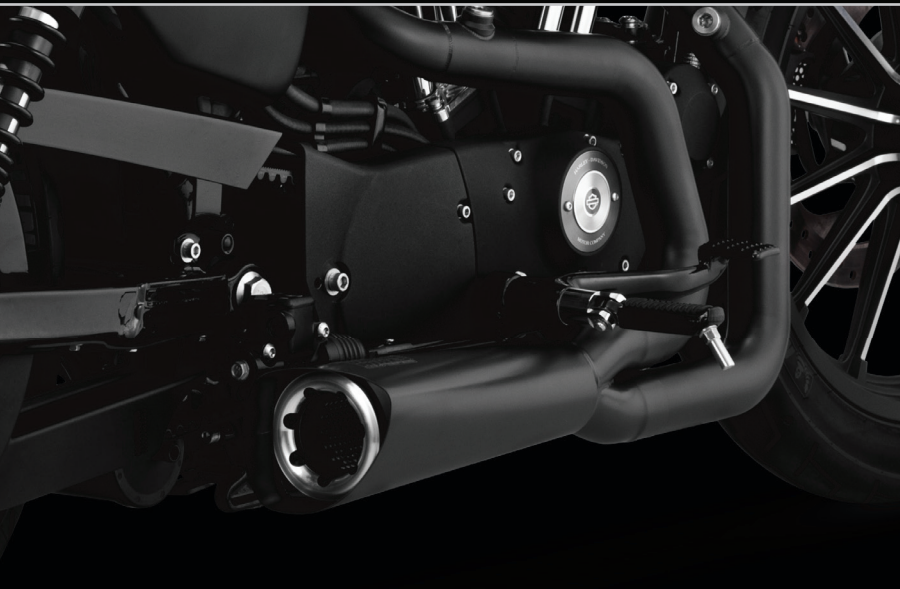
# COMPETITION SERIES 2-INTO-1

Softail • Dyna • Sportster • V-Rod

The Competition Series is a full line of ultra high performance drag race exhaust systems developed by the R&D team at the Vance & Hines race shop in Indianapolis.

- Lightweight Stainless Steel Construction
- Tapered and Stepped Head Pipes
- Slip-fit Merge Collectors
- Includes Wideband Sensor Ports
- Optional Quiet Insert Available





— AVAILABLE IN —



## SOFTAIL

YEAR	DESCRIPTION	V&H PART#
2000-2016	Black	75-114-9

## DYNA

YEAR	DESCRIPTION	V&H PART#
2006-2016	Brushed	75-115-4
2006-2016	Black	75-115-9

## SPORTSTER

YEAR	DESCRIPTION	V&H PART#
2004-2013	Brushed	75-117-4
2004-2013	Black	75-117-9

## V-ROD

YEAR	DESCRIPTION	V&H PART#
2002-2016	Black (2)	75-113-9
2009-2016	Black (V-Rod Muscle) (3)	75-116-9
2002-2016	Brushed (2)	75-113-4
2009-2016	Brushed (V-Rod Muscle) (3)	75-116-4

(2) Fits VRSCA/B/W V-Rod, VRSCD Night Rod and VRSCDX Night Rod Special  
 (3) Fits VRSCF V-Rod Muscle

— ACCESSORIES —



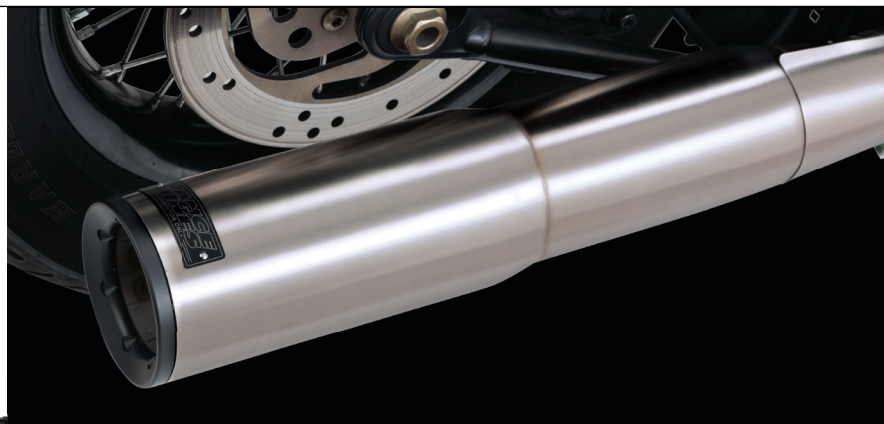
**vanceandhines**  
**.com**

# STAINLESS HI-OUTPUT 2-INTO-1

Touring • Softail • Dyna

Relentless in pushing the performance envelope, Vance & Hines introduces the Stainless Hi-Output 2-into-1 for the Touring, Softail and Dyna families. The Stainless Hi-Output 2-into-1 has been developed to increase volumetric efficiency to extract maximum horsepower.

- Brushed Stainless Steel TIG Welded Construction
- 2.5-inch to 3.25-inch Anti-Reversion Cone Baffle
- 2.5-inch Inlet on 2-into-1 Muffler
- Standard 12mm & Quick Access 18mm Oxygen Sensor Ports for Wideband Tuning Capability
- 4.5-inch Muffler Body At Exit



## TOURING

YEAR	DESCRIPTION	V&H PART#
2009-2016	Brushed	27533
1998-2008	Brushed	27535

## SOFTAIL

YEAR	DESCRIPTION	V&H PART#
1986-2016	Brushed	27521

## DYNA

YEAR	DESCRIPTION	V&H PART#
2006-2016	Brushed	27523

— AVAILABLE IN —

# STAINLESS HI-OUTPUT DUALS

Touring



Every aspect of the Stainless Hi-Output Duals has been developed and tested through countless hours of dyno time with the singular focus to increase volumetric efficiency critical to extracting maximum horsepower.

- 1.75-inch to 2-inch Tapered Head Pipes
- Standard 12mm & Quick Access 18mm Oxygen Sensor Ports for Wideband Tuning Capability
- Brushed Stainless Steel TIG Welded Construction
- 2.5-inch to 3.25-inch Anti-Reversion Cone Baffle
- 4.5-inch Muffler Body At Exit



## TOURING

YEAR	DESCRIPTION	V&H PART#
2009-2016	Brushed	26457

— AVAILABLE IN —



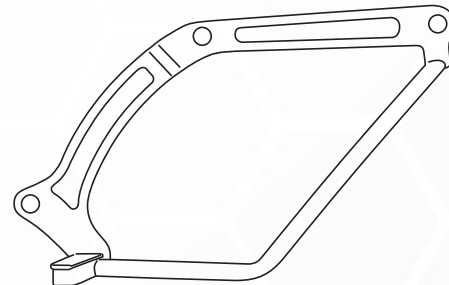
vanceandhines  
.com

# SWITCHBACK DUALS

Dyna

Designed exclusively for the Dyna Switchback, Vance & Hines offers the classic look of true duals paired with either Monster Round or Twin Slash Round Slip-Ons.

- Classic True Dual Design
- Full Coverage Head Pipe Heat Shields
- Paired with Monster or Twin Slash Round
- 4-inch Muffler Body At Exit



Includes two Custom Mounting Brackets

## DYNA

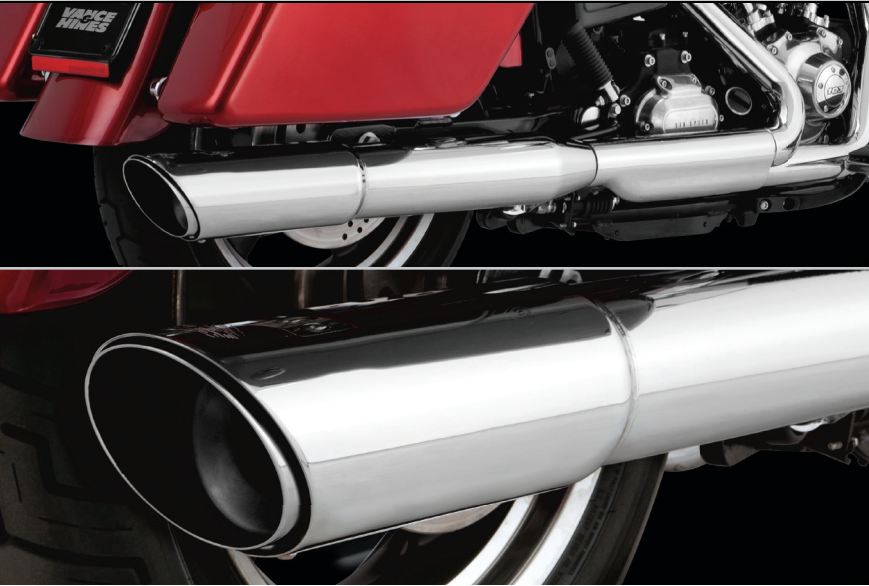
YEAR	DESCRIPTION	V&H PART#
2012-2016	Monster Round (1)	16855
2012-2016	Twin Slash (1)	16853

(1) Fits FLD Switchback

AVAILABLE IN

# SWITCHBACK SLIP-ON

Dyna



Our Twin Slash 2-into-1 features a large 4-inch muffler body with our signature twin slash end treatment. Utilizing an all new maintenance-free baffle and also minimizes heat discoloration, the Twin Slash 2-into-1 slip-on gives you the perfect blend of the performance and sound.

- Fits 2012-2016 Dyna Switchback
- Fits 2014-2016 Dyna Lowrider
- Best Value Slip-On
- Signature Twin Slash End Treatment



## DYNA

YEAR	DESCRIPTION	V&H PART#
2012-2016	Chrome (2)	16801
(2) Fits FLD Switchback, FXDL Low Rider		

— AVAILABLE IN —



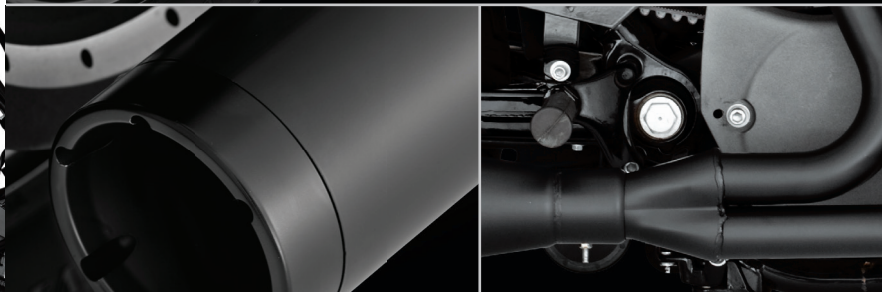
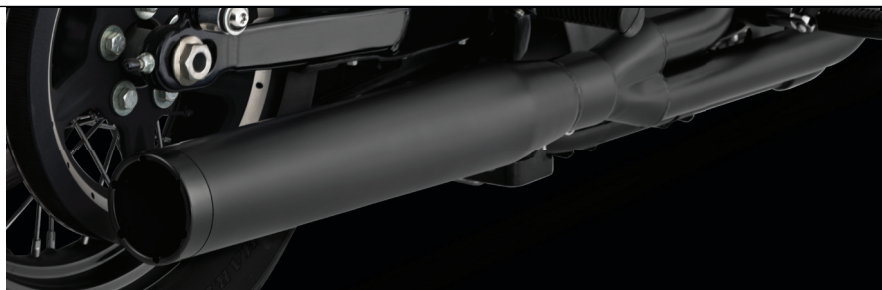
vanceandhines  
.com

# BLACKOUT 2-INTO-1

## Sportster

The Blackout 2-into-1 is a low-slung all black exhaust system inspired by the Dark Custom line models like the Nightster, Iron and Forty-Eight.

- Ideal Look for Dark Custom Sportster
- CNC Machined End Cap
- Optional Quiet Insert Available
- 3.5-inch Muffler Body At Exit



## SPORTSTER

YEAR	DESCRIPTION	V&H PART#
2004-2013	Black (1)	47501
<small>(1) Oxygen Sensor Plug Kit (16925) required when used on 2004-2006 models</small>		

— AVAILABLE IN —

# SIDESHOTS

Dyna • Sportster



## DYNA

YEAR	DESCRIPTION	V&H PART#
2006-2011	Chrome	26001
2006-2011	Black	46001

## SPORTSTER

YEAR	DESCRIPTION	V&H PART#
2004-2013	Chrome (2)	26035
2004-2013	Black (2)	46035

(2) Oxygen Sensor Plug Kit (16925) required when used on 2004-2006 models

AVAILABLE IN



Sideshots deliver increased horsepower and torque through our revolutionary Power Chamber technology. Hidden under the heat shields, the Power Chamber uses the volume of both mufflers to improve scavenging of each cylinder for more efficient combustion.

- Lightweight Stainless Steel Construction
- Slip-fit to OEM Head Pipes
- Optional Quiet Insert Available



vanceandhines  
.com

# ACCESSORIES

Touring • Softail • Dyna • Sportster • V-Rod • Street

With the Vance & Hines Header Wrap Kit, give any exhaust system a whole new look, from old school chopper to drag bike.

- Two Laser Cut Clamps
- Six Locking Stainless Steel Ties
- 25-foot Black Wrap Tape Roll
- Wraps Two Headers Thoroughly



O2 Sensor Plug Kit



Header Wrap Kit



## HEADER WRAP KIT

YEAR	DESCRIPTION	V&H PART#
ALL	Black	26523

## HEAT SHIELD KITS

YEAR	DESCRIPTION	V&H PART#
1999-2011	Pro Pipe Hi-Output Black (1)	60013
2006-2011	Pro Pipe Hi-Output Black (2)	60019

(1) Fits 1999-2013 Touring with 47533 or 47559 Pro Pipe Hi-Output 2-1  
(2) Fits 1986-2011 Softail with 47521 Pro Pipe Hi-Output 2-1

## ENDCAP KITS

YEAR	DESCRIPTION	V&H PART#
ALL	Fishtail Endcap (4)	16923
ALL	Slash-Cut Endcap (5)	16921

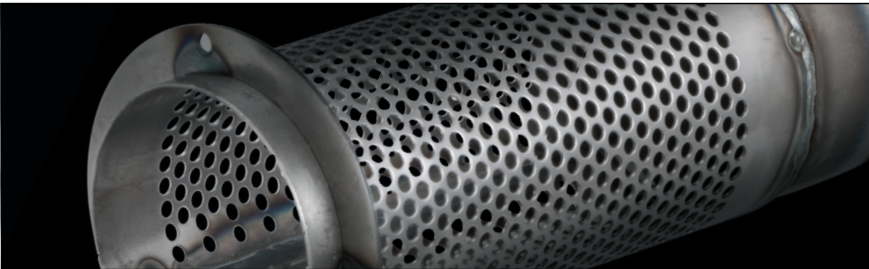
(4) Fits Softail Duals and Big Shot Duals (5) Fits Softail Duals, Big Shot Duals, Big Shots Long

## OXYGEN SENSOR PLUGS

YEAR	DESCRIPTION	V&H PART#
ALL	Oxygen Sensor Plug Kit (18mm)	16925
ALL	Oxygen Sensor Plug Kit (12mm)	16935

# BAFFLES & INSERTS

Touring • Softail • Dyna • Sportster • V-Rod • Street



For those who want the look but not necessarily all the sound, Vance & Hines offers quiet baffles & inserts to allow the sound to be customized to taste.

- Quiet Baffles Reduce Sound 2-3 Decibels
- Competition Baffles Increase Performance
- Many Available Applications
- Sold Individually

## QUIET BAFFLES & INSERTS

YEAR	DESCRIPTION	V&H PART#
ALL	Oversized 450	21884
ALL	Big Shots Staggered	21301
ALL	Big Shots Long	21301
ALL	Big Shot Duals	21301
ALL	Straightshots HS Slip-Ons	21301
ALL	Longshots HS	21301
ALL	Sideshots	21301
ALL	Shortshots Staggered	21301
ALL	Hi-Output Grenades (Softail/Dyna)	21863
ALL	Hi-Output Grenades (Sportster)	21886
ALL	Twin Slash 3-Inch Slip-Ons	21899
ALL	Fishtail 3-Inch Slip-Ons	21899
ALL	Pro Pipe	21906
ALL	Hi-Output Slip-Ons	21905
ALL	Hi-Output Slip-Ons Carbon	21905
ALL	Twin Slash Round Slip-Ons	21892
ALL	Blackout Round Slip-Ons	21892
ALL	Blackout Round 2-into-1	21892
ALL	Switchback Twin Slash Duals	21892
ALL	Twin Slash Oval Slip-Ons	21892
ALL	Widow XR1200 2-1-2	21911
ALL	Competition Series 2-Into-1	7-60093
ALL	Competition Series Slip-Ons	7-60093

## COMPETITION BAFFLES

YEAR	DESCRIPTION	V&H PART#
ALL	Twin Slash 3-Inch Slip-Ons	21897
ALL	Fishtail 3-Inch Slip-Ons	21897
ALL	Pro Pipe HS	21389
ALL	Pro Pipe	26529



vanceandhines  
.com

**VANCE  
HINES**





vanceandhines  
.com

# VO2 AIR INTAKE NAKED

Touring • Softail • Dyna • Sportster • Street

For those wanting to keep the stock look, but not necessarily the stock performance, Vance & Hines offers its VO2 Air Intake as a high flow intake kit for use with your stock cover or one of our custom options.

- Solid Performance Gains
- Washable High Flow Filter
- Larger Backing Plate
- CNC Machined Venturi



## SKULL CAP



## SKULL CAP CROWN



## VO2 AIR NAKED

YEAR	DESCRIPTION	V&H PART#
2014-2016	VO2 Air Intake (Touring)	71029
2008-2013	VO2 Air Intake (Touring) (1)	71003
1999-2007	VO2 Air Intake (Touring) (2)(3)	71005
2016	VO2 Air Intake (Softail)	71029
2000-2015	VO2 Air Intake (Softail) (4)	71005
2008-2016	VO2 Air Intake (Dyna)	71007
1999-2007	VO2 Air Intake (Dyna)	71005
1991-2016	VO2 Air Intake (Sportster) (5)	71011
2014-2016	VO2 Air Intake (Street) (5)	71028

(1) 2008-2015 CVO models require separate purchase of accessory air cleaner cover  
(2) Does not fit 1999-2001 fuel injected Touring Models (3) 2006-2007 CVO Ultra Classic requires purchase of accessory air cleaner cover (4) Does not fit FLSTNSE CVO Deluxe, FXSBSE CVO Breakout, 2011-2012 FLSTSE CVO Convertible (5) Does not fit with OEM air filter cover. Accessory air filter cover recommended

## ACCESSORY COVERS

YEAR	DESCRIPTION	V&H PART#
Multi Fit	VO2 Skullcap Chrome	71013
Multi Fit	VO2 Skullcap Crown Chrome	71017
Multi Fit	VO2 Skullcap Black	71015
Multi Fit	VO2 Skullcap Crown Black	71019
Multi Fit	VO2 Skullcap Crown Matte Chrome	71025



vanceandhines  
.com

# VO2 90 AIR INTAKE

Touring • Softtail • Dyna • Sportster

A modern twist on a classic design, the 90 Air Intake uses a forward-facing cone filter to maximize the increased air flow into the engine. Available in three finish combinations, the 90 Air Intake delivers looks to suit any taste.

- All new design for improved 90 Degree performance
- Custom covers for electronics and oil lines included
- Available in Chrome, Chrome and Black, and Black
- Available Late Spring



## TOURING

YEAR	DESCRIPTION	V&H PART#
2008-2016	VO2 90 Air Intake (1)	70022
2008-2016	VO2 90 Air Intake Black (1)	40022
2008-2016	VO2 90 Air Intake Black / Chrome (1)	70032
2002-2007	VO2 90 Air Intake (1)(2)	70025
2002-2007	VO2 90 Air Intake Black (1)(2)	40025
2002-2007	VO2 90 Air Intake Black / Chrome (1)	70035

(1) Does not fit models equipped with Twin-Cooled Engine, fairing lower glove boxes, or fairing lower speakers (2) Does not fit 1999-2001 fuel injected Touring Models

## SOFTTAIL

YEAR	DESCRIPTION	V&H PART#
2016	VO2 90 Air Intake	70022
2016	VO2 90 Air Intake Black	40022
2016	VO2 90 Air Intake Black / Chrome	70032
2000-2015	VO2 90 Air Intake (3)	70025
2000-2015	VO2 90 Air Intake Black (3)	40025
2000-2015	VO2 90 Air Intake Black / Chrome (3)	70035

(3) Does not fit FLSTNSE CVO Deluxe, FXBSE CVO Breakout, 2011-2012 FLSTSE CVO Convertible

## DYNA

YEAR	DESCRIPTION	V&H PART#
1999-2016	VO2 90 Air Intake	70025
1999-2016	VO2 90 Air Intake Black	40025
1999-2016	VO2 90 Air Intake Black / Chrome	70035

## SPORTSTER

YEAR	DESCRIPTION	V&H PART#
1991-2016	VO2 90 Air Intake	70029
1991-2016	VO2 90 Air Intake Black	40029
1991-2016	VO2 90 Air Intake Black / Chrome	70039

# VO2 AIR INTAKE GRENADE

Touring • Softail • Dyna • Sportster



## TOURING

YEAR	DESCRIPTION	V&H PART#
2008-2016	VO2 Air Intake Grenade	70041
2008-2016	VO2 Air Intake Grenade Matte Black	40041
2008-2016	VO2 Air Intake Grenade Gloss Black	40043
2002-2007	VO2 Air Intake Grenade	70045
2002-2007	VO2 Air Intake Grenade Matte Black	40045
2002-2007	VO2 Air Intake Grenade Gloss Black	40047

## SOFTAIL

YEAR	DESCRIPTION	V&H PART#
2016	VO2 Air Intake Grenade	70041
2016	VO2 Air Intake Grenade Matte Black	40041
2016	VO2 Air Intake Grenade Gloss Black	40043
2000-2015	VO2 Air Intake Grenade (4)	70045
2000-2015	VO2 Air Intake Grenade Matte Black (4)	40045
2000-2015	VO2 Air Intake Grenade Gloss Black (4)	40047

(4) Does not fit FLSTNSE CVO Deluxe, FXBSE CVO Breakout, 2011-2012 FLSTSE CVO Convertible

## DYNA

YEAR	DESCRIPTION	V&H PART#
1999-2016	VO2 Air Intake Grenade	70045
1999-2016	VO2 Air Intake Grenade Matte Black	40045
1999-2016	VO2 Air Intake Grenade Gloss Black	40047

## SPORTSTER

YEAR	DESCRIPTION	V&H PART#
1991-2014	VO2 Air Intake Grenade	70031
1991-2014	VO2 Air Intake Grenade Matte Black	40031
1991-2014	VO2 Air Intake Grenade Gloss Black	40033

Modern and sharp, the VO2 Grenade Air Intake improves engine performance with a touch of class and style, resonant with the stepped design of the Hi-Output Grenades exhaust system.

- CNC Machined Billet Cover with Riveted Badge
- Washable High Flow Filter Element
- Larger Inlet Backing Plate
- CNC Machined Billet Venturi



vanceandhines  
.com

# VO2 AIR INTAKE DUKE

Touring • Softtail • Dyna

Our Duke air intake system merges the perks of style and performance into one package. A classic round design paired with strategically placed cutouts allow for exceptional air flow as well as a stylish appearance.

- Solid Performance Gains
- Washable High Flow Filter
- Larger Backing Plate
- CNC Machined Venturi



## TOURING

YEAR	DESCRIPTION	V&H PART#
2008-2016	VO2 Air Intake Duke (1)	70007
1999-2007	VO2 Air Intake Duke (1)	70005
1999-2007	VO2 Air Intake Duke Black (1)	40005

(1) Does not fit 1999-2001 fuel injected Touring Models

## SOFTAIL

YEAR	DESCRIPTION	V&H PART#
2016	VO2 Air Intake Duke	70007
2000-2015	VO2 Air Intake Duke (2)	70005
2000-2015	VO2 Air Intake Duke Black (2)	40005

(2) Does not fit FLSTNSE CVO Deluxe, FXBSE CVO Breakout, 2011-2012 FLSTSE CVO Convertible

## DYNA

YEAR	DESCRIPTION	V&H PART#
1999-2016	VO2 Air Intake Duke	70005
1999-2016	VO2 Air Intake Duke Black	40005

## SPORTSTER

YEAR	DESCRIPTION	V&H PART#
1991-2016	VO2 Air Intake Duke	70009
1991-2016	VO2 Air Intake Duke Black	40009

# VO2 AIR INTAKE DRAK

Touring • Softail • Dyna



## TOURING

YEAR	DESCRIPTION	V&H PART#
2008-2016	VO2 Air Intake Drak (1)	70003
2008-2016	VO2 Air Intake Drak Black (1)	40003
1999-2007	VO2 Air Intake Drak (1)	70001
1999-2007	VO2 Air Intake Drak Black (1)	40001

(1) Does not fit 1999-2001 fuel injected Touring Models

## SOFTAIL

YEAR	DESCRIPTION	V&H PART#
2016	VO2 Air Intake Drak	70003
2016	VO2 Air Intake Drak Black	40003
2000-2015	VO2 Air Intake Drak (2)	70001
2000-2015	VO2 Air Intake Drak Black (2)	40001

(2) Does not fit FLSTNSE CVO Deluxe, FXBSE CVO Breakout, 2011-2012 FLSTSE CVO Convertible

## DYNA

YEAR	DESCRIPTION	V&H PART#
1999-2016	VO2 Air Intake Drak	70001
1999-2016	VO2 Air Intake Drak Black	40001

A modern twist on the classic style of cruiser air cleaners, the Drak air intake incorporates both style and performance into its design. The forward-facing air inlets ensure for maximum air flow.

- Solid Performance Gains
- Washable High Flow Filter
- Larger Backing Plate
- CNC Machined Venturi



vanceandhines  
.com

# RACE SHOP

COMPONENTS

## VANCE HINES





vanceandhines  
.com

# HIGH-PERFORMANCE VALVES

Touring • Softail • Dyna

Vance & Hines Raceshop Components are manufactured with state-of-the-art equipment, utilizing stringent quality control procedures to significantly improve all components for prolonged durability and reliability.

Whether building a street performance engine or a drag motor, Vance & Hines valvetrain components are drop-in upgrades providing needed stability while reducing premature wear. All components are made to exacting tolerances ensuring maximized performance.

- Precision CNC Machined From a Stainless One Piece Forging for Higher Strength & Durability
- High Grade Allows Design to Withstand High Heat and Maintain Roundness
- Chrome Coated
- Micro Polished Stem for Smoother Finish and Less Friction Resulting in Improved Performance
- Multi Angle Back Cuts for Enhanced Flow
- 7 Millimeter Stem



## VALVE SETS *(Contains 2pcs/ Set)*

YEAR	DESCRIPTION	V&H PART#
2005-2016	1.575" STD Exhaust- Stainless	35-4510
2005-2016	1.610" Exhaust- Stainless (+.035)	35-4511
2005-2016	1.630" Exhaust- Stainless (+.055)	35-4512
2005-2016	1.650" Exhaust- Stainless (+.075)	35-4513
2005-2016	1.630" Exhaust- Inconel (+.055)	35-4514
2005-2016	1.805" STD Intake- Stainless	35-4520
2005-2016	1.900" Intake- Stainless (+.095)	35-4521
2005-2016	2.000" Intake Stainless (+.195)	35-4522
2005-2016	1.900" Intake- Stainless Hollow Stem (+.095)	35-4523
2005-2016	2.000" Intake- Stainless Hollow Stem (+.195)	35-4524

## VALVE KITS *(Contains 2 QTY each Valve, Spring, Retainer, Spring Base, Viton Valve Seal & Keeper)*

YEAR	DESCRIPTION	V&H PART#
2005-2016	1.805" STD Valve/ Performance Springs	35-4530
2005-2016	1.900" Intake Valve/ Performance Springs	35-4531
2005-2016	2.000" Intake Valve/ Performance Springs	35-4532
2005-2016	1.575" Exhaust Valve/ Performance Springs	35-4540
2005-2016	1.610" Exhaust Valve/ Performance Springs	35-4541
2005-2016	1.650" Exhaust Valve/ Performance Springs	35-4542
2005-2016	1.650" Exhaust Valve/ Performance Springs	35-4543

# HIGH-PERFORMANCE SPRINGS

Touring • Softail • Dyna



## VALVE SPRINGS

SPECIFICATION		VALUE
Max. Lift:		0.600"
Spring Dia. (Large End):	O.D. 1.445" / I.D. 1.000"	
Spring Dia. (Small End):	O.D. 1.095" / I.D. 0.650"	
Installed Height:	180 lbs @ 1.850"	
Open Load:	400 lbs @ 1.250"	
Spring Rate:	370 lbs-in	
Max Coil Bind:	1.210"	

## SPRING KIT

(Contains 4 QTY of each piece)

YEAR	DESCRIPTION	V&H PART#
2004-2016	Springs, Retainer, Spring Base, Viton Seal, & Keeper (1)	35-4500
(1) Fits 2005-2016 Twin Cam and 2004-2016 Sportster XL		

Vance & Hines Raceshop Components twin cam high-performance beehive spring kits are designed with the latest advancements in valve spring technology. Our springs are nano-peened, polished and 100% inspected through load testing to ensure they exceed stringent quality standards, offering superior valve stability at high RPM range. They are the premium choice for your performance upgrade and are "drop-in" ready. No machining of heads is required.

- Retainers Made From 4140 Chromoly Steel.
- Heat Treated & Processed to Maintain High Strength and Lightweight Design
- Keepers Type FMOD7 Lock Angle 7°, Triple Radius Groove, Standard Install Height
- Equipped with Chromoly Spring Bases
- Kit Comes with Viton Seals Designed for Maximum Retention of Elastic Properties along with Excellent Resistance to Fluids, Heat, and Aging.

vanceandhines  
.com

# HIGH-PERFORMANCE CAMS/LIFTERS

Touring • Softail • Dyna

## Lifters

- Tighter I.D. Grind Resulting in Substantially Lower Leak Down
- Features "Direct-Shot" Oiling System Sending Oil to Axle and Roller Needle Bearings
- Allows for Use of Higher Spring Pressure and More RPM Capability
- Most Effective when Paired with Vance & Hines Camshafts and Valvetrain Components

## Camshafts

- "Bolt-In" Camshafts
- Features Silent Ramp Profile to Eliminate Valvetrain Noise
- 0.575" lift 240° on Both Intake & Exhaust
- Up to 95+ HP and 105 FT-LBS of Torque in a Stock 103 Engine with Power Duals, OS450 Slip-Ons, VO2 Air Intake, and FP3 Tune



## CAM SET (Contains camshaft set, chest gasket set, bearings)

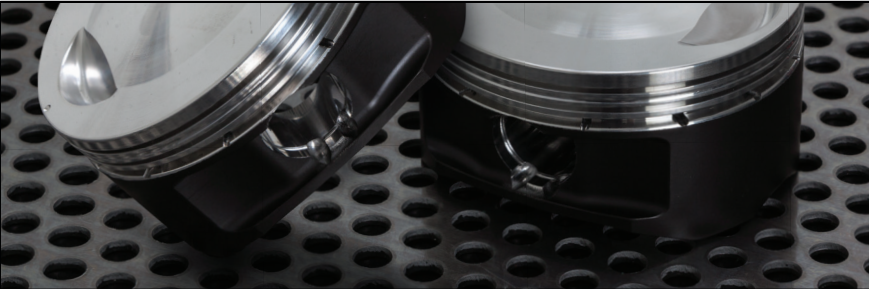
YEAR	DESCRIPTION	V&H PART#
2006-2016	Big Twin Cam Set (1)	35-4551
<small>(1) Fits 2006-2016 Dyna models and 2007-2016 FL, Softail, Dyna and Big Twin equipped models</small>		

## LIFTER SETS (Contains 2 QTY of each piece)

YEAR	DESCRIPTION	V&H PART#
1999-2016	Twin Cam Lifter Set (2)	35-4553
<small>(2) Fits 2000-2016 XL Sportster</small>		

# HIGH-PERFORMANCE PISTONS

Touring • Softail • Dyna



- Forged from 2618 Aluminum
- Moly-Coated Piston Skirts
- High-Strength, Light Weight Chromoly Wrist Pin
- Phosphate Coating to Reduce Micro-Welding and Pin Galling



**PISTON KIT** *Contains piston set, wrist pin, ring set, pin locks*

YEAR	DESCRIPTION	V&H PART#
2007-2016	Big Bore 107" Piston Set	35-4554

**vanceandhines**  
.com

# HIGH-PERFORMANCE PUSHRODS

Touring • Softail • Dyna

- Hardened & Tempered Chromoly
- Specially Developed for Extreme Spring Pressures
- 7/16" x 0.095" Single Taper 5/16" x 24 TPI



PUSHRODS		(Contains 2 QTY EX pushrod & INT pushrod)
YEAR	DESCRIPTION	V&H PART#
1999-2016	Pushrod Set	35-4552

# HIGH-PERFORMANCE LUBRICANTS

V-Twin Engines

**RACESHOP**  
COMPONENTS  
**VANCE  
HINES**



- Specifically Formulated with Anti-Wear Characteristics, Prolonging Engine Life
- Exceeds All Performance Criteria for American V-Twin Engines
- Formulated for Both Air-Cooled and Liquid-Cooled 4-Stroke Engines
- High-Temperature Stability and Superior Viscometric Profile



## ENGINE OIL

(Order Contains 12 1QT. bottles)

YEAR	DESCRIPTION	V&H PART#
ALL	Synthetic Blend 20W50	35-4560

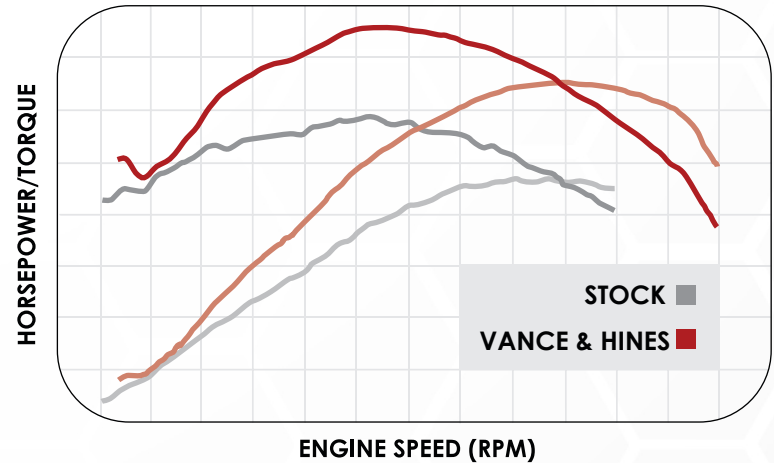
**vanceandhines**  
.com

# ADD UP TO 30 HORSEPOWER

## 30-HORSEPOWER PERFORMANCEPAK

From the development team that builds 300 horsepower Pro Stock engines, the Vance & Hines Raceshop introduces the +30HP Performancepak for Harley-Davidson Touring models. Injecting white-knuckle performance across the entire powerband, the +30HP Performancepak is the result of assembling the best selection of bolt-on components, combined with countless hours of tuning on the dyno to yield the best performance gain for a stock big twin engine.

- 575 High-Performance Camshaft Set
- OS450 Slip-Ons with Carbon Fiber End Caps
- Power Duals Head Pipes
- VO2 Air Intake Kit
- Fuelpak FP3 with Raceshop Mapping
- Adjustable Pushrods



## TOURING

YEAR	DESCRIPTION	V&H PART#
2009-2016	+30 HP Kit Chrome	35-4570
2009-2016	+30 HP Kit Black	35-4571



# TO STOCK BIKES!\*



\* Performed on stock 2013 Harley-Davidson Street Glide with 103 ci engine. Results may vary. Prototype shown.

**vanceandhines**  
**.com**

# FUELPAK LED/LCD

Touring • Softtail • Dyna • Sportster • V-Rod

The Fuelpak LED and LCD models are plug-and-play fuel controllers providing custom-tailored fuel mapping for all Delphi fuel injected Harley-Davidson models using SAE J1850 connectors and certain HDLAN connector models, that install in-line with the ECM and modify the output signal to the fuel injectors.

- Duplicate OEM Connectors for Easy Installation
- Simple Push Button Interface for Data Input
- Over 10,000 Map Configurations Available
- Designed and Manufactured In-House



Fuelpak LCD



Fuelpak LED



## TOURING

YEAR	DESCRIPTION	V&H PART#
2011-2013	Fuelpak	61019
2008-2010	Fuelpak	61009
2002-2007	Fuelpak	61003A

## SOFTAIL

YEAR	DESCRIPTION	V&H PART#
2007-2010	Fuelpak (200mm Tire)	61007A
2001-2010	Fuelpak (140mm Tire)	61001A

## DYNA

YEAR	DESCRIPTION	V&H PART#
2002-2011	Fuelpak	61005B

## SPORTSTER

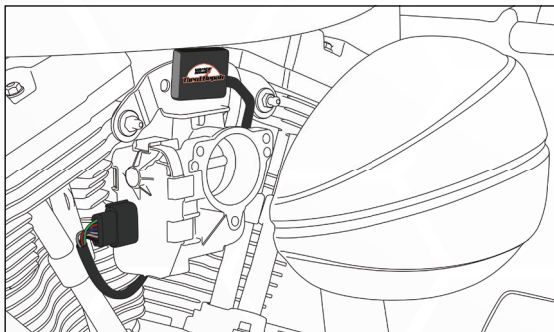
YEAR	DESCRIPTION	V&H PART#
2007-2013	Fuelpak	61023

## V-ROD

YEAR	DESCRIPTION	V&H PART#
2012-2013	Fuelpak	61021
2004-2011	Fuelpak	61005B

# THROTTLEPAK

Touring • Softail



Throttlepak™ Installed

Designed for throttle-by-wire motorcycles, Throttlepak improves the responsiveness of your engine by eliminating the factory-programmed electronic lag, whether you are running aftermarket exhausts or not. With Throttlepak, when you twist the throttle, the throttle body responds instantly.

- Compatible with Any Exhaust System
- Easy Plug and Play Design for Fast Installation
- Works on Stock or Modified Motorcycles
- Works with Flash or Piggyback FI Tuners
- Designed and Manufactured In-House



## TOURING

YEAR	DESCRIPTION	V&H PART#
2008-2013	Throttlepak	66003

## SOFTAIL

YEAR	DESCRIPTION	V&H PART#
2011-2013	Throttlepak	66003

vanceandhines  
.com

# APPAREL

T-Shirts • Hats

- Polyester Blend T-Shirt Material
- Shirts Available From S-3XL
- Flexfit Style Hats
- Hats Available in S/M & L/XL





— AVAILABLE IN —



## VANCE & HINES LOGO SHIRT

SIZE	V&H PART#
Small	35-0275
Medium	35-0276
Large	35-0277
Extra Large	35-0278
2 Extra Large	35-0279
3 Extra Large	35-0280

## MADE IN THE USA SHIRT-BLK

SIZE	V&H PART#
Small	24220
Medium	24221
Large	24222
Extra Large	24223
2 Extra Large	24224
3 Extra Large	24225

## MADE IN THE USA SHIRT-RED

SIZE	V&H PART#
Small	24230
Medium	24231
Large	24232
Extra Large	24233
2 Extra Large	24234
3 Extra Large	24235

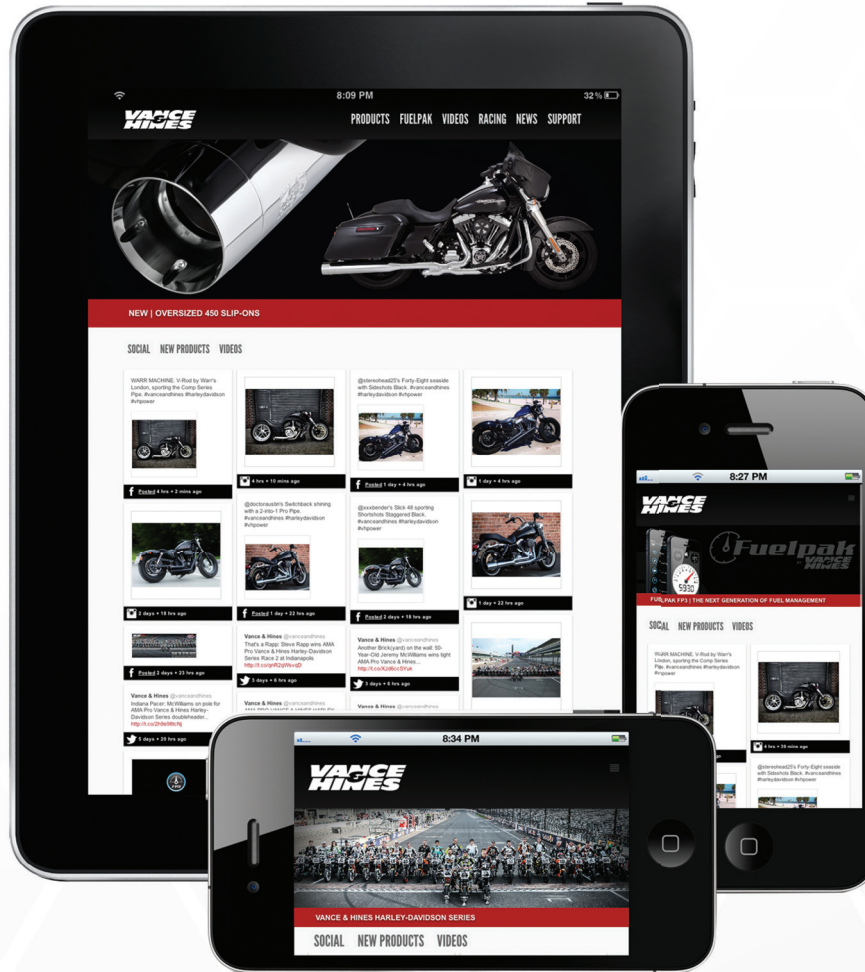
## FLEXFIT HAT

SIZE	V&H PART#
Small/Medium	35-0273
Large/Extra Large	35-0274

vanceandhines  
.com

# FIND YOUR APPLICATION

GO TO [VANCEANDHINES.COM](http://VANCEANDHINES.COM), NAVIGATE TO THE PRODUCTS PAGE VIA THE SITE'S MAIN NAVIGATION BAR TO BEGIN YOUR SEARCH.



# LISTEN TO YOUR PRODUCT

DOWNLOAD THE VANCE & HINES SOUND APP FROM THE APP STORE OR GOOGLE PLAY TO LISTEN TO ANY VANCE & HINES EXHAUST.



vanceandhines  
.com

# EMISSIONS / WARRANTY

For more information, please visit  
[vanceandhines.com/california](http://vanceandhines.com/california)

## EMISSIONS NOTICE

California regulates motorcycle aftermarket parts that have the potential to impact emissions. In most cases, the sale and use of emissions related aftermarket parts on motorcycles is prohibited unless it is either a "replacement part" as defined by California, or is a specifically authorized use of that part as reflected in an Executive Order ("EO Part.")

The California Air Resources Board (ARB) regulates aftermarket parts and has promulgated regulations that essentially place all emissions related aftermarket parts into three categories:

(1) Replacement Parts are aftermarket parts that ARB considers to be functionally equivalent to the stock part they are intended to replace, and therefore would not impact the emissions from these vehicles. These parts are appropriate for sale and use on motorcycles used on or off the public highways. For aftermarket exhaust systems and parts, there are two scenarios that identify most replacement parts:

(a) If the motorcycle's stock exhaust system does not contain a catalytic converter, then an aftermarket exhaust part is a replacement part as long as the part does not remove or replace any emission control equipment originally attached to the stock exhaust system, such as oxygen sensors.

(b) If the motorcycle's stock exhaust system contains a catalytic converter in the manifold section of the stock exhaust system, then an aftermarket muffler positioned downstream from the catalytic converter (i.e. cat-back) is a replacement part as long as the part does not remove or replace any emission control equipment originally attached to the stock exhaust system.

(2) Executive Order Parts are aftermarket parts that ARB has evaluated and determined do not adversely impact emissions, and thereby are granted an Executive Order (EO), which allows the part to be sold and used on motorcycles specified in the EO. Any aftermarket exhaust system that replaces or otherwise impacts emission control equipment, including catalytic converters, requires an EO to be sold and used on a motorcycle used on or off a public highway.

(3) Competition Use Only Parts may not be sold or used on a motorcycle that is used on or off the public highways other than those motorcycles used exclusively for competition. Competition Use Only Parts are aftermarket parts that replace or otherwise interfere with the operation of an emission control device, such as a catalytic converter or oxygen sensor, and are only to be sold for and used on a motorcycle that is used only for closed course competition.

## WORKMANSHIP WARRANTY

ALL VANCE & HINES PRODUCTS ARE WARRANTED AGAINST DEFECTS IN MATERIAL AND WORKMANSHIP FOR A PERIOD OF 1 YEAR. THIS WARRANTY DOES NOT COVER DISCOLORATION OR RUST. THIS WARRANTY SHALL BE LIMITED TO THE REPAIR OR REPLACEMENT OF THE PRODUCT, WHICH MAY BE PROVEN DEFECTIVE UNDER NORMAL USE. VANCE & HINES WILL NOT WARRANTY ANY SYSTEM THAT HAS BEEN ABUSED, MISUSED, IMPROPERLY INSTALLED OR MODIFIED.

DEALERS OR DISTRIBUTORS ARE NOT AUTHORIZED TO MAKE DISPOSITIONS BINDING UPON VANCE & HINES. VANCE & HINES WILL NOT BE RESPONSIBLE FOR ANY LABOR CHARGES INCURRED IN REMOVING OR REPLACING ANY SYSTEM UNDER WARRANTY. A RETURN AUTHORIZATION NUMBER AND A COPY OF THE ORIGINAL PURCHASE INVOICE MUST ACCOMPANY ALL RETURNS. PARTS RETURNED WITHOUT A RETURN AUTHORIZATION MAY BE REFUSED.

# 8-TIME CHAMPIONS

HARLEY-DAVIDSON SCREAMIN' EAGLE / VANCE & HINES PRO STOCK MOTORCYCLE TEAM



*Andrew Hines*  
**5x**  
Champion  
ANDREW HINES

*Eddie Krawiec*  
**3x**  
Champion  
EDDIE KRAWIEC



13861 Rosecrans Ave, Santa Fe Springs, CA 90670  
800.592.2529 | [info@vanceandhines.com](mailto:info@vanceandhines.com)  
[vanceandhines.com](http://vanceandhines.com) | [facebook.com/vanceandhines](https://facebook.com/vanceandhines)