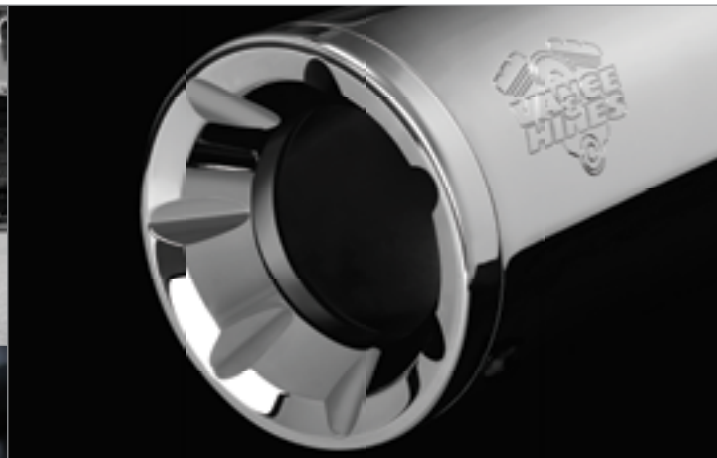




**VANCE
HINES**

TWENTY17

AMERICAN V-TWIN PERFORMANCE PRODUCTS





6

2017 NEW PRODUCTS

The latest products and innovations we are proud to introduce into the Vance & Hines lineup.

8

HEADERS & SLIP-ONS

For those looking to increase power and sound without breaking the bank, slip-on mufflers are an excellent choice. For Touring models, we also offer aftermarket headers to maximize performance.

29

FULL SYSTEMS

Full exhaust systems push the envelope of performance a step further by increasing flow, while giving the motorcycle a custom appearance.

43

AIR INTAKE SYSTEMS

In order to take full advantage of a performance exhaust system, the use of a high-flow air intake system is a must.

49

RACESHOP COMPONENTS

The highest levels of competition require components capable of withstanding the abuse of racing. Raceshop Components bring the products Vance & Hines racers use to the everyday rider.

57

BAFFLES/ACCESSORIES

Vance & Hines' collection of quiet and competition baffles allow sound to be altered to the consumer's needs. Header wrap is also available for those looking to cool down riding temperatures.

vanceandhines
.com

FUELPAK FP3

Touring • Softail • Dyna • Sportster • Street



(SMART PHONE NOT INCLUDED)



MY BIKE RUNS FANTASTIC!

“My bike runs fantastic. Speedo calibration and the room to do future mods along with ease of use and great support.”

'14 LIMITED | WASHINGTON

SIMPLE AND EASY!

“Simple and easy sums up the FP3. In less than 10 minutes your bike is tuned and ready 2 go. No dyno needed.”

MATTEGLIDE15 | PENNSYLVANIA

“IF YOU ARE INTO GETTING THE MOST PERFORMANCE OUT OF YOUR MACHINE, THEN YOU SHOULD SERIOUSLY LOOK INTO THE FP3.”

-HOT BIKE MAGAZINE

(PRODUCT SHOWN ACTUAL SIZE)



VISIT **FUELPAK.VANCEANDHINES.COM** FOR MORE INFORMATION
ON FUELPAK FP3 & FUELPAK LED/LCD

1 CONNECT

DOWNLOAD THE FUELPACK FP3 APP, PLUG IN THE FP3 AND START THE PAIRING PROCESS

2 TUNE

SELECT A MAP BASED ON YOUR MOTORCYCLE OR FULLY CUSTOMIZE WITH THE FP3 EDITING TOOLS.

3 RIDE

AFTER THE SIMPLE TASK OF FLASHING THE MOTORCYCLE WITH ONE OF OVER 10,000 CUSTOM MAPS FROM VANCE & HINES, ALL THAT IS LEFT TO DO IS RIDE. ENJOY THE THRILLS OF THE NEWLY AWAKENED POWER WITHIN THE MOTORCYCLE.

FOR CLOSED COURSE COMPETITION USE ONLY.
NOT INTENDED FOR STREET USE.



INTELLIGENT AUTOTUNE FEATURE



REDUCES THE PRESENCE OF DECELERATION POP



CONNECTS VIA BLUETOOTH TO SMARTPHONE / TABLET



SUPPORTS VANCE & HINES & OTHER AFTERMARKET CAMS



IMPROVES THROTTLE RESPONSE

FITMENT INFO

YEAR	DESCRIPTION	V&H PART#
2014-2017	Fuelpak FP3 CAN BUS (Touring)	66005
2011-2017	Fuelpak FP3 CAN BUS (Softail)	66005
2012-2017	Fuelpak FP3 CAN BUS (Dyna)	66005
2014-2017	Fuelpak FP3 CAN BUS (Sportster)	66005
2015-2017	Fuelpak FP3 CAN BUS (Street)	66005
2007-2013	Fuelpak FP3 J1850 (Touring)(1)	66007
2007-2010	Fuelpak FP3 J1850 (Softail)(2)	66007
2007-2011	Fuelpak FP3 J1850 (Dyna)(2)	66007
2007-2013	Fuelpak FP3 J1850 (Sportster)	66007

(1) Fits 2009-2013 CVO models depending on VIN (2) Does not fit CVO models

FOR MORE APPLICATIONS VISIT VANCEANDHINES.COM

vanceandhines
.com

MONSTER V SLIP-ONS

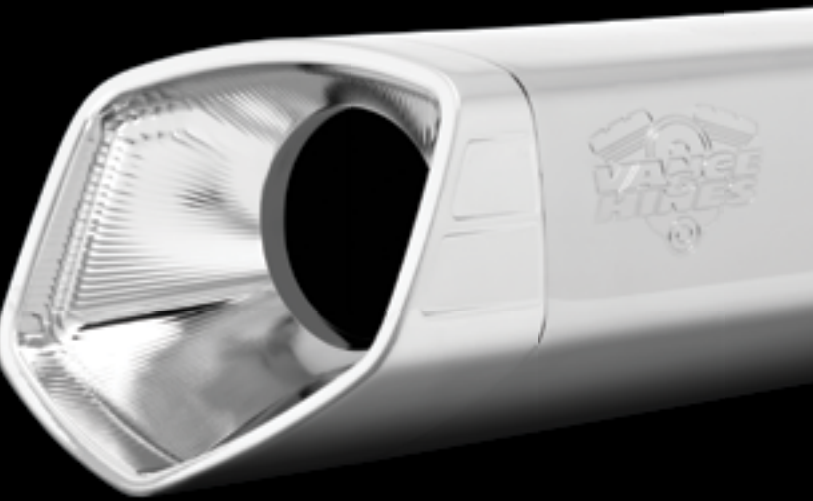
NEW PRODUCT!

Touring

For distinguished touring riders, Monster V's are the premium slip-on mufflers of choice. The new Monster V's are the most refined design from Vance & Hines, meticulously executed from the smooth round inlet to the perfectly sculpted V shaped end cap. Monster V's produce deep mellow tones that will make you want to ride another hundred miles. Simply put, these mufflers are ideal for long distance rides. Monster V's comprise a high capacity design, which yield broad power gains.

- Oversized 5.5-inch V Angular Design
- Full Coverage Heat Shields
- 5.5-inch Machined Billet End Caps





AVAILABLE IN



TOURING

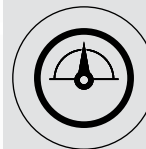
YEAR	DESCRIPTION	V&H PART#
2017	Chrome	16563
2017	Black	46563
1995-2016	Chrome	16565
1995-2016	Black	46565

COMPLETE THE PACKAGE



POWER DUAL HEADERS

Power Dual Headers reduce heat and use a power chamber to increase power over factory headers.



FUELPAK

Fuelpaks use fuel maps developed in-house to optimize engine performance based on your unique combination of stock and aftermarket components.

FOR CLOSED COURSE COMPETITION USE ONLY.
NOT INTENDED FOR STREET USE.

vanceandhines
.com

POWER DUALS

NEW FITMENTS!

Touring

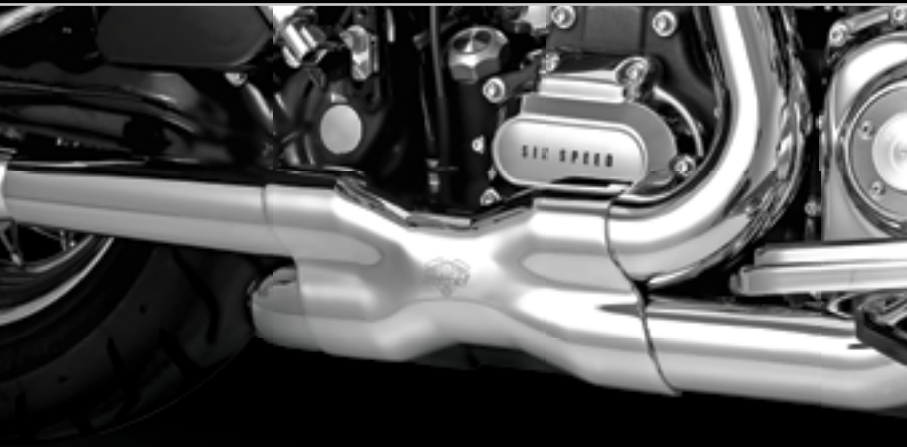
The unique look of the contoured heat shields on the Power Duals head pipes elegantly masks the prowess of the Power Chamber crossover that enhances performance over the stock head pipes.

- Helps Reduce Exhaust Temperatures Up to 250°F
- Full Coverage Heat Shields
- Includes Dual Bung Oxygen Sensor Ports (18mm & 12mm)





2017 Models



2009-2016 Models

AVAILABLE IN



TOURING

YEAR	DESCRIPTION	V&H PART#
2017	Chrome (1)	16871
2017	Black (1)	46871
2009-2016	Chrome (2)	16832
2009-2016	Black (2)	46832

(1) Trike Adaptor Kit (16784) required for use on 2017 Trike models

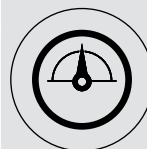
(2) Trike Adaptor Kit (16785) required for use on 2009-2016 Trike models

COMPLETE THE PACKAGE



VO2 GRENADE AIR INTAKE

VO2 Air Intake systems use a billet venturi and a less restrictive filter element to increase air flow.



FUELPAK

Fuelpaks use fuel maps developed in-house to optimize engine performance based on your unique combination of stock and aftermarket components.

FOR CLOSED COURSE COMPETITION USE ONLY.
NOT INTENDED FOR STREET USE.

vanceandhines
.com

DRESSER DUALS

Touring

Add the sleek look of true dual head pipes with Dresser Duals, complete with full coverage heat shields and available for all Touring models from 1995 to present.

- Classic True Dual Design
- Full Coverage Heat Shields
- Includes Dual Bung Oxygen Sensor Ports (18mm & 12mm)





2009-2016 Models



1995-2008 Models



1995-2008 Models

AVAILABLE IN



TOURING

YEAR	DESCRIPTION	V&H PART#
2017	Chrome (1)	17651
2017	Black (1)	47651
2009-2016	Chrome (2)	16752
2009-2016	Black (2)	46752
1995-2008	Chrome (3)	16799
1995-2008	Black (3)	46799

(1) Trike Adaptor Kit (16784) required for use on 2017 Trike models

(2) Trike Adaptor Kit (16785) required for use on 2009-2016 Trike models

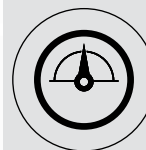
(3) Oxygen sensor plug kit (16925) required when used on 1995-2006 models

COMPLETE THE PACKAGE



VO2 NAKED WITH SKULLCAP CROWN

VO2 Air Intake systems use a billet venturi and a less restrictive filter element to increase air flow.



FUELPAK

Fuelpaks use fuel maps developed in-house to optimize engine performance based on your unique combination of stock and aftermarket components.

FOR CLOSED COURSE COMPETITION USE ONLY.
NOT INTENDED FOR STREET USE.

vanceandhines
.com

ELIMINATOR 400 SLIP-ONS

Touring

Featuring large 4-inch mufflers finished with race-inspired CNC machined billet end caps, Eliminator 400s are tuned to give Harley-Davidson baggers a deep and aggressive roar.

- CNC Machined Billet End Caps
- Large 4-inch Round Muffler Body
- Fits Saddlebags with Extended Skirts
- Optional Quiet Baffles Available





AVAILABLE IN



TOURING

YEAR	DESCRIPTION	V&H PART#
2017	Chrome	16714
2017	Black	46714
2017	Chrome / Black Tips	16708
1995-2016	Chrome	16703
1995-2016	Black	46703
1995-2016	Chrome / Black Tips	16706

COMPLETE THE PACKAGE



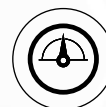
POWER DUAL HEADERS

Power Dual Headers reduce heat and use power chamber to increase power over factory headers.



VO2 NAKED WITH SKULLCAP CROWN

VO2 Air Intake systems use a billet venturi and a less restrictive filter element to increase air flow.



FUELPAK

Fuelpaks use fuel maps developed in-house to optimize engine performance based on your unique combination of stock and aftermarket components.

FOR CLOSED COURSE COMPETITION USE ONLY.
NOT INTENDED FOR STREET USE.

vanceandhines
.com

OVERSIZED 450 SLIP-ONS

Touring

The OverSized 450 Slip-On line also puts out a big deep-toned rumble thanks to its large fiberglass wrapped 2.5-inch perforated core baffles, which can also be tempered down with optional quiet baffles. Available in all chrome, all black or chrome with black end caps.

- Aggressive Throaty Tone
- Massive 4.5-inch Round Mufflers
- CNC Machined Billet End Caps
- Optional Quiet Baffles Available





AVAILABLE IN



TITAN

YEAR	DESCRIPTION	V&H PART#
2017	Chrome	16650
2017	Chrome / Black Tips	16652
2017	Black	46650
1995-2016	Chrome	16549
1995-2016	Chrome / Black Tips	16551
1995-2016	Black	46549

RAIDER

YEAR	DESCRIPTION	V&H PART#
2017	Chrome	16658
2017	Chrome / Black Tips	16670
2017	Black	46658
1995-2016	Chrome	16557
1995-2016	Chrome / Black Tips	16559
1995-2016	Black	46557

DESTROYER

YEAR	DESCRIPTION	V&H PART#
2017	Chrome	16654
2017	Chrome / Black Tips	16656
2017	Black	46654
1995-2016	Chrome	16553
1995-2016	Chrome / Black Tips	16555
1995-2016	Black	46553

FOR CLOSED COURSE COMPETITION USE ONLY.
NOT INTENDED FOR STREET USE.

vanceandhines
.com

HI-OUTPUT SLIP-ONS

Touring

The Hi-Output Slip-Ons' design is singularly focused to yield maximum horsepower and features a deep race-inspired exhaust note.

- Aggressive Stepped Styling
- Fits Saddlebags with Extended Skirts
- Optional Quiet Insert Available



AVAILABLE IN



TOURING

YEAR	DESCRIPTION	V&H PART#
2017	Chrome	16463
2017	Black	46463
1995-2016	Chrome	16455
1995-2016	Black	46759

FOR CLOSED COURSE COMPETITION USE ONLY.
NOT INTENDED FOR STREET USE.

AVAILABLE IN



MONSTER ROUND SLIP-ONS

Touring



Monster Rounds match the same deep rich tone of Monster Ovals in a 4-inch round that fits perfect on CVO Dressers with extended saddlebag skirts.

- Full Coverage Heat Shields
- CNC Machined End Cap
- Fits Saddlebags with Extended Skirts



TOURING

YEAR	DESCRIPTION	V&H PART#
2017	Chrome	16780
2017	Black	46780
1995-2016	Chrome	16773
1995-2016	Black	46773

FOR CLOSED COURSE COMPETITION USE ONLY.
NOT INTENDED FOR STREET USE.

vanceandhines
.com

TWIN SLASH ROUND SLIP-ONS

Touring

AVAILABLE IN

Twin Slash Rounds take the classic look of a round slip-on and add a touch of distinction with a twin slash end treatment, at an unbeatable price.

- Best Value Touring Slip-On
- Large 4-inch Round Muffler Body
- Signature Twin Slash End Treatment
- Optional Quiet Insert Available



TOURING

YEAR	DESCRIPTION	V&H PART#
2017	Chrome	16672
1995-2016	Chrome	16763
2010	Chrome (2-into-1 Slip-On) (1)	16777

(1) For use on stock head pipe of 2010 Street Glide & Road Glide

FOR CLOSED COURSE COMPETITION USE ONLY.
NOT INTENDED FOR STREET USE.

AVAILABLE IN



TWIN SLASH OVAL SLIP-ONS

Touring



The Twin Slash look is available with the classic Vance & Hines Oval Slip-On, a favorite among touring riders for over ten years.

- Signature Twin Slash End Treatment
- Large 4.5-inch Oval Muffler Body
- Optional Quiet Baffle Available



TOURING

YEAR	DESCRIPTION	V&H PART#
1995-2016	Chrome	16767

FOR CLOSED COURSE COMPETITION USE ONLY.
NOT INTENDED FOR STREET USE.

vanceandhines
.com

HI-OUTPUT CARBON SLIP-ONS

Touring

The Hi-Output Slip-Ons' design is singularly focused to yield maximum horsepower and features a deep race-inspired exhaust note.

- Aggressive Stepped Styling
- Handcrafted Carbon End Tip
- Fits Saddlebags with Extended Skirts
- Optional Quiet Insert Available



AVAILABLE IN



TOURING

YEAR	DESCRIPTION	V&H PART#
1995-2016	Chrome	16465
1995-2016	Black	46465

FOR CLOSED COURSE COMPETITION USE ONLY.
NOT INTENDED FOR STREET USE.

AVAILABLE IN



MONSTER OVAL SLIP-ONS

Touring

With twice the internal volume of standard slip-on mufflers, Monster Ovals produce strong and broad power with a deep rich tone that's ideal for long distance touring.

- Massive 5.5-inch Oval Muffler Body
- Full Coverage Heat Shields
- CNC Machined End Cap



TOURING

YEAR	DESCRIPTION	V&H PART#
1995-2016	Chrome / Black Tips	16753
1995-2016	Chrome	16755
1995-2016	Black / Chrome Tips	46755
2009-2013	Chrome (EC Compliant)	16787

FOR CLOSED COURSE COMPETITION USE ONLY.
NOT INTENDED FOR STREET USE.

vanceandhines
.com

FISHTAIL 3-INCH SLIP-ONS

Touring

Meticulously formed, Fishtail Slip-Ons are excellent choices for capturing a nostalgic look on a classic FL touring bike.

- Optional Quiet and Competition Baffles
- 3-inch Round with Fishtail End Cap
- Classic Fishtail Styling



AVAILABLE IN



TOURING

YEAR	DESCRIPTION	V&H PART#
1995-2016	Chrome	16775

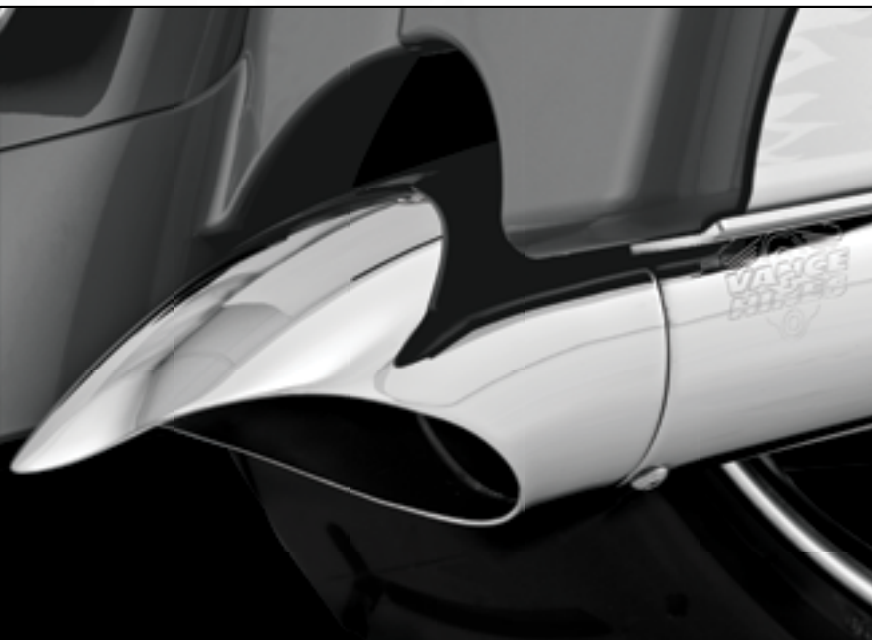
FOR CLOSED COURSE COMPETITION USE ONLY.
NOT INTENDED FOR STREET USE.

AVAILABLE IN



TURNDOWN SLIP-ONS

Touring



Turndown Slip-ons feature large 4-inch muffler bodies with the Vance & Hines signature turndown end treatment compatible with CVO drop skirt bags. An all new maintenance-free baffle is used that also minimizes heat discoloration.

- Nostalgic Styling
- 4-inch Round with Scalloped Turndown
- Optional Quiet Insert Available



TOURING

YEAR	DESCRIPTION	V&H PART#
1995-2016	Chrome	16761

FOR CLOSED COURSE COMPETITION USE ONLY.
NOT INTENDED FOR STREET USE.

vanceandhines
.com

TRIKE DELUXE SLIP-ONS

Tri Glide

Exclusively designed for the Harley-Davidson Tri Glide Ultra Classic and Street Glide Trike, the Trike Deluxe Slip-Ons improve ground clearance and provide a deep rich stereo friendly sound.

- Designed for Harley-Davidson Trike Models
- Monster Oval Sound & Performance
- Improved Ground Clearance Over Stock Mufflers
- Rolled Stainless Steel End Treatment



AVAILABLE IN



TOURING

YEAR	DESCRIPTION	V&H PART#
2009-2017	Polished Tip (1)(2)	16789
2017	Trike Adaptor Kit	16784
2009-2016	Trike Adaptor Kit	16785

(1) 2017 Models require trike adapter kit 16784 when paired with aftermarket headers

(2) 2009-2016 Models require trike adapter kit 16785 when paired with aftermarket headers

FOR MORE APPLICATIONS VISIT VANCEANDHINES.COM

**FOR CLOSED COURSE COMPETITION USE ONLY.
NOT INTENDED FOR STREET USE.**

AVAILABLE IN



TWIN SLASH ROUND SLIP-ONS

Free Wheeler



Specially designed for the Harley-Davidson Freewheeler with a shorter length cut to fit the compact size of the Freewheeler chassis, Twin Slash Round Slip-Ons give the Freewheeler a nice throaty rumble and can be matched with Vance & Hines Power Dual or Dresser Dual head pipes.

- 4-inch Round Mufflers
- Signature Twin Slash End Treatment
- Optional Quiet Inserts



TRIKE ADAPTOR KIT

This kit extends the standard Vance & Hines 2009-2017 Touring head pipes to allow for proper fitment on Harley Trike models.

TOURING

YEAR	DESCRIPTION	V&H PART#
2015-2017	Chrome (1)(2)	16798
2017	Trike Adaptor Kit	16784
2015-2016	Trike Adaptor Kit	16785

(1) 2017 Models require trike adaptor kit 16784 when paired with aftermarket headers
(2) 2015-2016 Models require trike adaptor kit 16785 when paired with aftermarket headers

FOR CLOSED COURSE COMPETITION USE ONLY.
NOT INTENDED FOR STREET USE.

vanceandhines
.com

STRAIGHTSHOTS HS SLIP-ONS

Softail • Dyna • Sportster

AVAILABLE IN

Straightshots HS Slip-Ons are the quickest way to pick up performance and get big bike sound without breaking the bank.

- Full Coverage Heat Shields
- Optional Quiet Baffle Available
- 2.5-inch Round with Straight-Cut End Treatment



SOFTAIL

YEAR	DESCRIPTION	V&H PART#
2007-2017	Chrome (1)	16831
2007-2017	Chrome (2)(3)	16833
2007-2017	Chrome (4)	16827
2000-2006	Chrome (5)	16821

(1) Fits FLSTC Heritage, FXST Softail Standard, FXSTB Night Train, FXSTC Softail Custom, FXCW Rocker, FXCWC CVO Springer Softail (2) Fits FLSTN Deluxe, FLS Slim, FLSTSB Crossbones, FXSB Breakout (3) Does not fit FLSTNSE CVO Deluxe (4) Fits FLSTF Fat Boy, FLSTFB Fat Boy Lo/Special, 2007-2008 FXSTSE CVO Springer Softail (5) Fits FLSTC Heritage, FXST Softail Standard, FXSTB Night Train

DYNA

YEAR	DESCRIPTION	V&H PART#
1991-2017	Chrome (6)	16823

(6) Does not fit 2008-2017 FXDF Fat Bob, 2010-2017 FXDWG Wide Glide, 2014-2017 FXDL Low Rider or FLD Switchback

SPORTSTER

YEAR	DESCRIPTION	V&H PART#
2014-2017	Chrome	16863
2004-2013	Chrome	16819

FOR CLOSED COURSE COMPETITION USE ONLY.
NOT INTENDED FOR STREET USE.

AVAILABLE IN



TWIN SLASH 3-INCH SLIP-ONS

Softail • Dyna • Sportster



Twin Slash 3-inch Slip-Ons are an excellent choice for a quick and inexpensive upgrade to customize the look, sound and performance of your Harley.

- Full Coverage Heat Shields
- Signature Twin Slash End Treatment
- Quiet and Competition Baffles Available

SOFTAIL

YEAR	DESCRIPTION	V&H PART#
2007-2017	Chrome (7)	16835
2007-2017	Chrome (8)	16841
2007-2017	Chrome (9)	16843
2011-2017	Chrome (10)	16847
2007-2017	Black (8)	46841
2007-2017	Black (9)	46843
2011-2017	Black (10)	46847

(7) Fits FXST Standard, FXSTC Custom, FLSTC Heritage Classic, FXSTB Night Train, FXCW Rocker, FXSB Breakout (8) Fits FLSTN Deluxe, FLS Slim, FLSTSB Cross Bones (9) Fits FLSTF Fatboy, FLSTFB Fatboy Lo, FXSTD Deuce (10) Fits FXS Blackline, 2016-2017 Fatboy/Slim S Models

DYNA

YEAR	DESCRIPTION	V&H PART#
1991-2017	Chrome (11)	16837
2008-2017	Chrome (12)	16845
1991-2017	Black (11)	46837
2008-2017	Black (12)	46845

(11) Does not fit FXDF Fat Bob, 2010-2017 FXDWG Wide Glide, 2014-2017 FXDL Low Rider or FLD Switchback (12) Fits FXDF Fat Bob, 2010-2017 FXDWG Wide Glide

SPORTSTER

YEAR	DESCRIPTION	V&H PART#
2014-2017	Chrome	16861
2004-2013	Chrome	16839
2014-2017	Black	46861
2004-2013	Black	46839

FOR CLOSED COURSE COMPETITION USE ONLY.
NOT INTENDED FOR STREET USE.



vanceandhines
.com

COMPETITION SERIES SLIP-ON

V-Rod • Street

The Competition Series Slip-Ons are a direct slip-fit to the OEM head pipes, and with a matching pearl nickel or matte black finish, they add an aggressive angular look with an equally aggressive sound.

- Lightweight Stainless Steel Construction
- Slip-fit to OEM Head Pipes
- Optional Quiet Insert Available



AVAILABLE IN



V-ROD

YEAR	DESCRIPTION	V&H PART#
2009-2017	Pearl Nickel (V-Rod Muscle)	75-110-14

STREET

YEAR	DESCRIPTION	V&H PART#
2014-2017	Black	47937

FOR CLOSED COURSE COMPETITION USE ONLY.
NOT INTENDED FOR STREET USE.

AVAILABLE IN



COMPETITION SERIES 2-INTO-1

Softail • Dyna • Sportster • V-Rod

SOFTAIL

YEAR	DESCRIPTION	V&H PART#
2000-2017	Black	75-114-9

DYNA

YEAR	DESCRIPTION	V&H PART#
2006-2017	Brushed	75-115-4
2006-2017	Black	75-115-9

SPORTSTER

YEAR	DESCRIPTION	V&H PART#
2014-2017	Brushed	75-118-4
2014-2017	Black	75-118-9
2004-2013	Brushed	75-117-4
2004-2013	Black	75-117-9

V-ROD

YEAR	DESCRIPTION	V&H PART#
2002-2017	Black (1)	75-113-9
2009-2017	Black (V-Rod Muscle) (2)	75-116-9
2002-2017	Brushed (1)	75-113-4
2009-2017	Brushed (V-Rod Muscle) (2)	75-116-4

(1) Fits VRSCA/B/W V-Rod, VRSCD Night Rod and VRSCDX Night Rod Special
(2) Fits VRSCF V-Rod Muscle

FOR CLOSED COURSE COMPETITION USE ONLY.
NOT INTENDED FOR STREET USE.

The Competition Series is a full line of ultra high performance drag race exhaust systems developed by the R&D team at the Vance & Hines race shop in Indianapolis.

- Lightweight Stainless Steel Construction
- Tapered and Stepped Head Pipes
- Slip-fit Merge Collectors
- Includes Wideband Sensor Ports
- Optional Quiet Insert Available



vanceandhines
.com

2-INTO-1 UPSWEEP

NEW PRODUCT!

Dyna • Sportster

This 2-into-1 captures the essence of the urban scene. With a sculpted collector design covering the heart of this dyno tuned 2-into-1, it delivers street focused power and improved cornering clearance.

- CNC Machined Billet End Cap
- Optional Quiet Baffle
- Sculpted Collector Heat Shield





*Shown on Dyna



AVAILABLE IN



DYNA

YEAR	DESCRIPTION	V&H PART#
2006-2017	Chrome	17622
2006-2017	Black	46722

SPORTSTER

YEAR	DESCRIPTION	V&H PART#
2007-2017	Chrome (1)	17624
2007-2017	Black (1)	47624

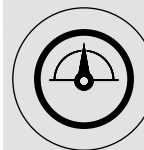
(1) Not compatible with forward controls

COMPLETE THE PACKAGE



VO2 NAKED WITH SKULLCAP

VO2 Naked Air Intake systems use a billet venturi and a less restrictive filter element to increase air flow.



FUELPAK

Fuelpaks use fuel maps developed in-house to optimize engine performance based on your unique combination of stock and aftermarket components.

FOR CLOSED COURSE COMPETITION USE ONLY.
NOT INTENDED FOR STREET USE.

vanceandhines
.com

HI-OUTPUT 2-INTO-1 SHORT

Softail • Dyna

AVAILABLE IN



The Hi-Output family expands the line with an aggressively stout 2-into-1. Engineered to be a compact version of our signature stepped megaphone, the Hi-Output 2-into-1 Short is perfect for the rider that demands the performance of a 2-into-1 and the distinctive sound of the Hi-Output.

- Deep, Throaty Note
- CNC Machined Billet End Cap
- Optional Quiet Baffle



SOFTAIL

YEAR	DESCRIPTION	V&H PART#
1986-2017	Chrome	16543
1986-2017	Black	46543
2013-2017	Chrome (1)	16545
2013-2017	Black (1)	46545

(1) Fits Breakout and CVO Breakout models

DYNA

YEAR	DESCRIPTION	V&H PART#
2006-2017	Chrome	16541
2006-2017	Black	46541

FOR CLOSED COURSE COMPETITION USE ONLY.
NOT INTENDED FOR STREET USE.

AVAILABLE IN



HI-OUTPUT GRENADES

Softail • Dyna • Sportster



Hi-Output Grenades break new ground with innovative three step mufflers and tapered CNC machined billet end caps. Staggered for a commanding stance, Hi-Output Grenades have a strong deep tone and are available in chrome/black with three end cap finishes.

- Aggressive Deep Tone
- Innovative Three-Step Muffler Design
- CNC Machined Billet End Caps
- Patent Pending

SOFTAIL

YEAR	DESCRIPTION	V&H PART#
2000-2017	Chrome (2)(3)(4)	16846
2000-2017	Chrome / Black Tips (2)(3)(4)	16848
2000-2017	Black (2)(3)(4)	46846
2000-2017	Black / Pearl Nickel Tips (2)(3)(4)	46848
2000-2017	Passenger Footpeg Relocation Bracket	16939
1986-1999	Adaptor Bracket Kit	21898

(2) Foot peg relocation bracket required for passenger footpeg installation

(3) Does not fit FXCW Rocker, FXCWC Rocker C or 2009 FXSTSSE Springer Softail

(4) Does not fit FXSB Breakout or FXSBSE CVO Breakout

DYNA

YEAR	DESCRIPTION	V&H PART#
2006-2017	Chrome (5)	16899
2006-2017	Chrome / Black Tips (5)	16896
2006-2017	Black (5)	46899
2006-2017	Black / Pearl Nickel Tips (5)	46896
2006-2017	Passenger Footpeg Relocation Bracket	16941

(5) Foot peg relocation bracket required for passenger footpeg installation

SPORTSTER

YEAR	DESCRIPTION	V&H PART#
2004-2017	Chrome (6)(7)	16854
2004-2017	Chrome / Black Tips (6)(7)	16852
2004-2017	Black (6)(7)	46854
2004-2017	Black / Pearl Nickel Tips (6)(7)	46852

(6) Passenger foot pegs must be removed (7) Oxygen Sensor Plug Kit (16925) required when used on 2004-2006 models

**FOR CLOSED COURSE COMPETITION USE ONLY.
NOT INTENDED FOR STREET USE.**



vanceandhines
.com

BIG RADIUS 2-INTO-2

Touring • Softail • Dyna • Sportster

AVAILABLE IN



The original game changer, Big Radius 2-into-2 brings together radical custom bike styling with precision quality features like full coverage heat shields and dyno-tuned baffles.

- Custom Bike Styling
- Radius Curved Louvered Baffles
- Full Coverage Heat Shields



TOURING

YEAR	DESCRIPTION	V&H PART#
2010-2016	Chrome	26057
2009	Black (1)	46047
1999-2006	Chrome	26045

(1) Fits 2009-2016 Touring using aftermarket wideband sensors

SOFTAIL

YEAR	DESCRIPTION	V&H PART#
2013-2017	Chrome (2)	26065
2013-2017	Black (2)	46065
2008-2011	Chrome (Rocker)	26043
1986-2017	Chrome (3)	26069
1986-2017	Black (3)	46069

(2) Fits FXSB Breakout and FXSBSE CVO Breakout (3) Oxygen sensor plug kit (16925) required when used on 1986-2006 models

DYNA

YEAR	DESCRIPTION	V&H PART#
2006-2017	Chrome	26071
2006-2017	Black	46071
1991-2005	Chrome	26007

SPORTSTER

YEAR	DESCRIPTION	V&H PART#
2014-2017	Chrome	26067
2014-2017	Black	46067
2004-2013	Chrome (4)	26055
2004-2013	Black (4)	46055

(4) Oxygen Sensor Plug Kit (16925) required when used on 2004-2006 models

FOR CLOSED COURSE COMPETITION USE ONLY.
NOT INTENDED FOR STREET USE.

AVAILABLE IN



BIG RADIUS 2-INTO-1

Softail • Dyna



At the intersection of radical style and superior power, Big Radius 2-into-1 plays the part with finely sculpted lines and a race engineered 2-into-1 design.

- Radius Style, 2-into-1 Performance
- Broad/Usable Torque Increase
- Full Coverage Heat Shields

SOFTAIL

YEAR	DESCRIPTION	V&H PART#
2012-2017	Chrome	28019
2012-2017	Black	48019
1986-2011	Chrome (5)(6)(7)(8)	28001
1986-2011	Black (5)(6)(7)(8)	48001

(5) Oxygen Sensor Plug Kit (16925) required when used on 1986-2006 models (6) Does not fit bikes with saddlebags that mount to the passenger foot peg (7) 1986-1999 models passenger foot pegs must be removed (8) Does not fit FXCW Rocker, FXCWC Rocker C or 2009 FXSTSSE Springer Softail

DYNA

YEAR	DESCRIPTION	V&H PART#
2012-2017	Chrome (9)	28021
2012-2017	Black (9)	48021

(9) Requires removal of passenger foot pegs

FOR CLOSED COURSE COMPETITION USE ONLY.
NOT INTENDED FOR STREET USE.



vanceandhines
.com

SUPER RADIUS

Touring • Softail • Dyna

Super Radius brings a deeper and richer tone to the custom-styled exhaust, engineered for today's larger capacity big twin engines to get solid performance and just the right sound.

- Bold Custom Bike Styling
- Deeper Tone Compared to Big Radius 2-into-2
- Full Coverage Heat Shields
- Quiet Insert Included



AVAILABLE IN



TOURING

YEAR	DESCRIPTION	V&H PART#
2007-2016	Chrome	26053
2007-2016	Black	46063

SOFTAIL

YEAR	DESCRIPTION	V&H PART#
1986-2017	Chrome (1)(2)	26051
1986-2017	Black (1)(2)	46051

(1) Does not fit FXCW Rocker, FXCWC Rocker C or 2009 FXSTSSE Springer Softail
(2) Does not fit FXSB Breakout or FXSBSE CVO Breakout

DYNA

YEAR	DESCRIPTION	V&H PART#
2006-2017	Chrome	26053
2006-2017	Black	46053

FOR CLOSED COURSE COMPETITION USE ONLY.
NOT INTENDED FOR STREET USE.

AVAILABLE IN



SHORTSHOTS STAGGERED

Softail • Dyna • Sportster

SOFTAIL

YEAR	DESCRIPTION	V&H PART#
2012-2017	Chrome (2)	17225
2012-2017	Black (2)	47225
1986-2011	Chrome (1)(3)	17221
1986-2011	Black (1)(3)	47221
1986-2006	Chrome (4)	17209

(1) Does not fit FXCW Rocker, FXCWC Rocker C or 2009 FXSTSSE Springer Softail

(2) Does not fit FXSB Breakout or FXSBSE CVO Breakout

(3) Oxygen sensor plug kit (16925) required when used on 1986-2006 models

(4) Original Shortshots

An unparalleled value, Shortshots Staggered deliver hot rod sound and performance wrapped in full-length heat shields, at a price rivaling most slip-ons.

- Signature Twin Slash End Treatment
- Full Coverage Heat Shields
- Optional Quiet Baffle Available

DYNA

YEAR	DESCRIPTION	V&H PART#
2012-2017	Chrome	17227
2012-2017	Black	47227
2006-2011	Chrome	17217
2006-2011	Black	47217
1991-2005	Chrome	17213
1991-2005	Chrome (5)	17205
1987-1994	Chrome (6)	17207

(5) Original Shortshots (6) Original Shortshots, Fits FXR

SPORTSTER

YEAR	DESCRIPTION	V&H PART#
2014-2017	Chrome	17229
2014-2017	Black	47229
2004-2013	Chrome (7)	17219
2004-2013	Black (7)	47219
1999-2003	Chrome	17223
1999-2003	Black	47223

(7) Oxygen Sensor Plug Kit (16925) required when used on 2004-2006 models

FOR CLOSED COURSE COMPETITION USE ONLY.
NOT INTENDED FOR STREET USE.



vanceandhines
.com

BIG SHOTS STAGGERED

Softail • Dyna

Big Shots Staggered give you the best of both worlds, long and low 2-into-2 style pipes with 2-into-1 performance thanks to the Vance & Hines Power Chamber hidden crossover.

- Power Chamber Crossover Technology
- Full Coverage Heat Shields
- Optional Quiet Baffle Available



AVAILABLE IN



SOFTAIL

YEAR	DESCRIPTION	V&H PART#
1986-2017	Chrome (1)(2)	17939
1986-2017	Black (1)(2)	47939

(1) Does not fit FXCW Rocker, FXCWC Rocker C or 2009 FXSTSSE Springer Softail
(2) Does not fit FXSB Breakout or FXSBSE CVO Breakout

DYNA

YEAR	DESCRIPTION	V&H PART#
2006-2017	Chrome	17938
2006-2017	Black	47938
1991-2005	Chrome	17911

FOR CLOSED COURSE COMPETITION USE ONLY.
NOT INTENDED FOR STREET USE.

AVAILABLE IN



BIG SHOTS LONG/LONGSHOTS

Softail / Dyna



The nostalgic look of Big Shots Long is especially well suited for the Heritage Softail Classic, where the length of the exhaust system runs beneath the saddlebag to the edge of the rear wheel.

- Power Chamber Crossover Technology
- Full Coverage Heat Shields
- Optional Quiet Baffle Available

SOFTAIL

YEAR	DESCRIPTION	V&H PART#
2012-2017	Chrome (1)	17823
1986-2011	Chrome (2)(3)	17923
1986-2006	Chrome (4)	17813
1986-2006	Chrome (5)	17811

(1) Does not fit FXCW Rocker, FXCWC Rocker C or 2009 FXSTSSE Springer Softail

(2) Does not fit FXSB Breakout or FXSBSE CVO Breakout

(3) Oxygen Sensor Plug Kit (16925) required when used on 1986-2006 models

(4) Longshots HS (5) Longshots Original

DYNA

YEAR	DESCRIPTION	V&H PART#
1991-2005	Chrome (6)	17805

(6) Longshots Original

FOR CLOSED COURSE COMPETITION USE ONLY.
NOT INTENDED FOR STREET USE.



vanceandhines
.com

PRO PIPE

Touring • Softail • Dyna

Featuring a distinctive stepped megaphone design, this latest evolution in the Vance & Hines 2-into-1 performance legacy improves performance over its predecessors .

- Broad/Usable Torque Increase
- Stepped Headers, Large Merge Collector
- Quiet and Competition Baffles Available
- 4.5-inch Muffler Body At Exit



AVAILABLE IN



TOURING

YEAR	DESCRIPTION	V&H PART#
2017	Chrome	17583
2017	Black	47583
2010-2016	Chrome	17559
2010-2016	Black	47561
2009	Chrome (1)	17539
1999-2008	Chrome (2)	17557
1999-2008	Black (2)	47557

(1) Fits 2009-2016 Touring using aftermarket wideband sensors (2) Oxygen Sensor Plug Kit (16925) required when used on 1999-2006 models

SOFTAIL

YEAR	DESCRIPTION	V&H PART#
2012-2017	Chrome (3)	17571
2012-2017	Black (3)	47527
1986-2011	Chrome (4)(5)	17547
1986-2011	Black (4)(5)	47547

(3) Does not fit FXSB Breakout or FXSBSE CVO Breakout

(4) Oxygen sensor plug kit (16925) required when used on 1986-2006 models

(5) Does not fit FXCW Rocker, FXCWC Rocker C or 2009 FXSTSSE Springer Softail

DYNA

YEAR	DESCRIPTION	V&H PART#
2012-2017	Chrome	17569
2012-2017	Black	47525
2012-2016	Chrome (6)	17573
2006-2011	Chrome	17551
2006-2011	Black	47551
1991-2005	Chrome (7)	17523

(6) Fits Dyna Switchback (7) Pro Pipe HS

FOR CLOSED COURSE COMPETITION USE ONLY.
NOT INTENDED FOR STREET USE.

AVAILABLE IN



STRAIGHTSHOTS

Softail • Dyna • Sportster



The staggered dual layout of Straightshots never falls out of fashion, but it's never been better with full-length one piece heat shields for a clean and seamless style.

- Classic Staggered Drag Pipe Styling
- Full Coverage Heat Shields
- Optional Quiet Baffle Available

SOFTAIL

YEAR	DESCRIPTION	V&H PART#
1986-2011	Chrome (5)(7)	17817

(5) Does not fit FXCW Rocker, FXCWC Rocker C or 2009 FXSTSSE Springer Softail

(7) Oxygen Sensor Plug Kit (16925) required when used on 1986-2006 models

DYNA

YEAR	DESCRIPTION	V&H PART#
2006-2011	Chrome	17819
1991-2005	Chrome (8)	16805

(8) Original Straightshots

SPORTSTER

YEAR	DESCRIPTION	V&H PART#
2004-2013	Chrome (9)	17821
1986-2003	Chrome (Mid Controls) (10)	16809
1999-2003	Chrome (Forward Controls) (10)	16811

(9) Oxygen Sensor Plug Kit (16925) required when used on 2004-2006 models

(10) Original Straightshots

FOR CLOSED COURSE COMPETITION USE ONLY.
NOT INTENDED FOR STREET USE.



vanceandhines
.com

SOFTAIL DUALS

Softail

Enhance the nostalgic look of a Springer Softail Classic or any other Softail model with Softail Duals' true dual head pipes and matched straight-cut slip-ons.

- Classic True Dual Design
- Full Coverage Heat Shields
- Optional Quiet Baffle Available
- Fishtail and Slash-Cut Tips Optional



SOFTAIL

YEAR	DESCRIPTION	V&H PART#
2012-2017	Chrome (1)(2)(3)	16893
1997-2011	Chrome (1)(4)(5)	16793

(1) Optional Fishtail End Cap (16923) available

(2) Optional Slash Cut End Cap (16921) available

(3) Does not fit FXSB Breakout or FXSBSE CVO Breakout

(4) Does not fit FXCW Rocker, FXCWC Rocker C or 2009 FXSTSSE Springer Softail

(5) Oxygen Sensor Plug Kit (16925) required when used on 1997-2006 models

**FOR CLOSED COURSE COMPETITION USE ONLY.
NOT INTENDED FOR STREET USE.**

VO2 NAKED AIR INTAKE

Touring • Softail • Dyna • Sportster • Street



SKULLCAP CROWN



SKULLCAP

VO2 AIR NAKED

YEAR	DESCRIPTION	V&H PART#
2017	VO2 Naked Air Intake (Touring) (5)	71031
2014-2016	VO2 Naked Air Intake (Touring) (6)	71029
2008-2013	VO2 Naked Air Intake (Touring)	71003
1999-2007	VO2 Naked Air Intake (Touring) (7)(8)	71005
2016-2017	VO2 Naked Air Intake (Softail) (9)	71029
2000-2015	VO2 Naked Air Intake (Softail) (10)	71005
2008-2017	VO2 Naked Air Intake (Dyna)	71007
1999-2007	VO2 Naked Air Intake (Dyna)	71005
1991-2017	VO2 Naked Air Intake (Sportster) (5)	71011
2014-2017	VO2 Naked Air Intake (Street) (5)	71028

(5) Does not fit with OEM air filter cover. Accessory air filter cover recommended
(6) 2008-2015 CVO models require separate purchase of accessory air cleaner cover
(7) Does not fit 1999-2001 fuel injected Touring Models (8) 2006-2007 CVO Ultra Classic requires purchase of accessory air cleaner cover (9) Fits 2011-2012 CVO Convertible, 2013-2014 CVO Breakout, 2014-2015 CVO Deluxe (10) Does not fit 2011-2012 CVO Convertible, 2013-2014 CVO Breakout, 2014-2015 CVO Deluxe

ACCESSORY COVERS

YEAR	DESCRIPTION	V&H PART#
Multi Fit	VO2 Skullcap Chrome	71013
Multi Fit	VO2 Skullcap Crown Chrome	71017
Multi Fit	VO2 Skullcap Black	71015
Multi Fit	VO2 Skullcap Crown Black	71019
Multi Fit	VO2 Skullcap Crown Matte Chrome	71025

FOR CLOSED COURSE COMPETITION USE ONLY.
NOT INTENDED FOR STREET USE.

For those wanting to keep the stock look, but not necessarily the stock performance, Vance & Hines offers its VO2 Naked Air Intake as a high flow intake kit for use with your stock cover or one of our custom options.

- Enhanced Air Flow Over Stock
- Washable High Flow Filter
- Larger Backing Plate
- CNC Machined Venturi



vanceandhines
.com

VO2 DRAK AIR INTAKE

Touring • Softail • Dyna

A modern twist on the classic style of cruiser air cleaners, the Drak air intake incorporates both style and performance into its design. The forward-facing air inlets ensure for maximum air flow.

- Solid Performance Gains
- Washable High Flow Filter
- Larger Backing Plate
- CNC Machined Venturi



TOURING

YEAR	DESCRIPTION	V&H PART#
2008-2016	VO2 Drak Air Intake Carbon	70053
2008-2016	VO2 Drak Air Intake	70003
2008-2016	VO2 Drak Air Intake Black	40003
1999-2007	VO2 Drak Air Intake (1)	70001
1999-2007	VO2 Drak Air Intake Black (1)	40001

(1) Does not fit 1999-2001 fuel injected Touring Models

SOFTAIL

YEAR	DESCRIPTION	V&H PART#
2016-2017	VO2 Drak Air Intake Carbon	70053
2016-2017	VO2 Drak Air Intake (2)	70003
2016-2017	VO2 Drak Air Intake Black (2)	40003
2000-2015	VO2 Drak Air Intake (3)	70001
2000-2015	VO2 Drak Air Intake Black (3)	40001

(2) Fits 2011-2012 CVO Convertible, 2013-2014 CVO Breakout, 2014-2015 CVO Deluxe (3)
Does not fit 2011-2012 CVO Convertible, 2013-2014 CVO Breakout, 2014-2015 CVO Deluxe

D Y N A

YEAR	DESCRIPTION	V&H PART#
1999-2017	VO2 Drak Air Intake Drak	70001
1999-2017	VO2 Drak Air Intake Drak Black	40001

**FOR CLOSED COURSE COMPETITION USE ONLY.
NOT INTENDED FOR STREET USE.**

VO2 ROGUE AIR INTAKE

Touring • Softail • Dyna • Sportster



For those looking to carry the classic upswept design through their motorcycle, the VO2 Rogue air intake echoes the classic rounded styling of the 2-into-1 Upsweep exhaust system.

- Includes Washable High Flow Filter Element
- Includes Large Inlet Backing Plate and Billet Venturi
- Available in Chrome & Black Finish

TOURING

YEAR	DESCRIPTION	V&H PART#
2008-2016	VO2 Rogue Air Intake	70075
2008-2016	VO2 Rogue Air Intake Black	40075
2002-2007	VO2 Rogue Air Intake	70073
2002-2007	VO2 Rogue Air Intake Black	40073

SOFTAIL

YEAR	DESCRIPTION	V&H PART#
2016-2017	VO2 Rogue Air Intake (4)	70075
2016-2017	VO2 Rogue Air Intake Black (4)	40075
2000-2015	VO2 Rogue Air Intake (5)	70073
2000-2015	VO2 Rogue Air Intake Black (5)	40073

(4) Fits 2011-2012 CVO Convertible, 2013-2014 CVO Breakout, 2014-2015 CVO Deluxe (5) Does not fit 2011-2012 CVO Convertible, 2013-2014 CVO Breakout, 2014-2015 CVO Deluxe

DYNA

YEAR	DESCRIPTION	V&H PART#
1999-2017	VO2 Rogue Air Intake	70073
1999-2017	VO2 Rogue Air Intake Black	40073

SPORTSTER

YEAR	DESCRIPTION	V&H PART#
1991-2017	VO2 Rogue Air Intake	70071
1991-2017	VO2 Rogue Air Intake Black	40071

FOR CLOSED COURSE COMPETITION USE ONLY.
NOT INTENDED FOR STREET USE.



vanceandhines
.com

VO2 90 AIR INTAKE

Touring • Softtail • Dyna • Sportster

A modern twist on a classic design, the 90 Air Intake uses a forward-facing cone filter to maximize the increased air flow into the engine. Available in three finish combinations, the 90 Air Intake delivers looks to suit any taste.

- All new design for improved 90 Degree performance
- Custom covers for electronics and oil lines included
- Available in Chrome, Chrome and Black, and Black



TOURING

YEAR	DESCRIPTION	V&H PART#
2008-2016	VO2 90 Air Intake (1)	70022
2008-2016	VO2 90 Air Intake Black (1)	40022
2008-2016	VO2 90 Air Intake Black / Chrome (1)	70032
2002-2007	VO2 90 Air Intake (1)(2)	70025
2002-2007	VO2 90 Air Intake Black (1)(2)	40025
2002-2007	VO2 90 Air Intake Black / Chrome (1)(2)	70035

(1) Does not fit models equipped with Twin-Cooled Engine, fairing lower glove boxes, or fairing lower speakers (2) Does not fit 1999-2001 fuel injected Touring Models

SOFTAIL

YEAR	DESCRIPTION	V&H PART#
2016-2017	VO2 90 Air Intake (3)	70022
2016-2017	VO2 90 Air Intake Black (3)	40022
2016-2017	VO2 90 Air Intake Black / Chrome (3)	70032
2000-2015	VO2 90 Air Intake (4)	70025
2000-2015	VO2 90 Air Intake Black (4)	40025
2000-2015	VO2 90 Air Intake Black / Chrome (4)	70035

(3) Fits 2011-2012 CVO Convertible, 2013-2014 CVO Breakout, 2014-2015 CVO Deluxe (4) Does not fit 2011-2012 CVO Convertible, 2013-2014 CVO Breakout, 2014-2015 CVO Deluxe

DYNA

YEAR	DESCRIPTION	V&H PART#
1999-2017	VO2 90 Air Intake	70025
1999-2017	VO2 90 Air Intake Black	40025
1999-2017	VO2 90 Air Intake Black / Chrome	70035

SPORTSTER

YEAR	DESCRIPTION	V&H PART#
1991-2017	VO2 90 Air Intake	70029
1991-2017	VO2 90 Air Intake Black	40029
1991-2017	VO2 90 Air Intake Black / Chrome	70039

FOR CLOSED COURSE COMPETITION USE ONLY.
NOT INTENDED FOR STREET USE.

VO2 CAGE FIGHTER AIR INTAKE

Touring • Softail • Dyna • Sportster



Sporting a sleek and minimalistic design, the VO2 Cage Fighter is designed for maximum air flow to the filter element while providing a custom look.

- Includes Washable High Flow Filter Element
- Includes Large Inlet Backing Plate and Billet Venturi
- Available in Brushed Finish

TOURING

YEAR	DESCRIPTION	V&H PART#
2008-2016	VO2 Cage Fighter Air Intake	70065
2002-2007	VO2 Cage Fighter Air Intake	70067

SOFTAIL

YEAR	DESCRIPTION	V&H PART#
2016-2017	VO2 Cage Fighter Air Intake (5)	70065
2000-2015	VO2 Cage Fighter Air Intake (6)	70067

(5) Fits 2011-2012 CVO Convertible, 2013-2014 CVO Breakout, 2014-2015 CVO Deluxe (6) Does not fit 2011-2012 CVO Convertible, 2013-2014 CVO Breakout, 2014-2015 CVO Deluxe

DYNA

YEAR	DESCRIPTION	V&H PART#
1999-2017	VO2 Cage Fighter Air Intake	70067

SPORTSTER

YEAR	DESCRIPTION	V&H PART#
1991-2017	VO2 Cage Fighter Air Intake	70069

FOR CLOSED COURSE COMPETITION USE ONLY.
NOT INTENDED FOR STREET USE.



vanceandhines
.com

VO2 GRENADE AIR INTAKE

Touring • Softail • Dyna • Sportster

Modern and sharp, the VO2 Grenade Air Intake improves engine performance with a touch of class and style, resonant with the stepped design of the Hi-Output Grenades exhaust system.

- CNC Machined Billet Cover with Riveted Badge
- Washable High Flow Filter Element
- Larger Inlet Backing Plate
- CNC Machined Billet Venturi



TOURING

YEAR	DESCRIPTION	V&H PART#
2008-2016	VO2 Grenade Air Intake	70041
2008-2016	VO2 Grenade Air Intake Matte Black	40041
2008-2016	VO2 Grenade Air Intake Gloss Black	40043
2002-2007	VO2 Grenade Air Intake	70045
2002-2007	VO2 Grenade Air Intake Matte Black	40045
2002-2007	VO2 Grenade Air Intake Gloss Black	40047

SOFTAIL

YEAR	DESCRIPTION	V&H PART#
2016-2017	VO2 Grenade Air Intake (1)	70041
2016-2017	VO2 Grenade Air Intake Matte Black (1)	40041
2016-2017	VO2 Grenade Air Intake Gloss Black (1)	40043
2000-2015	VO2 Grenade Air Intake (2)	70045
2000-2015	VO2 Grenade Air Intake Matte Black (2)	40045
2000-2015	VO2 Grenade Air Intake Gloss Black (2)	40047

(1) Fits 2011-2012 CVO Convertible, 2013-2014 CVO Breakout, 2014-2015 CVO Deluxe (2) Does not fit 2011-2012 CVO Convertible, 2013-2014 CVO Breakout, 2014-2015 CVO Deluxe

DYNA

YEAR	DESCRIPTION	V&H PART#
1999-2017	VO2 Grenade Air Intake	70045
1999-2017	VO2 Grenade Air Intake Matte Black	40045
1999-2017	VO2 Grenade Air Intake Gloss Black	40047

SPORTSTER

YEAR	DESCRIPTION	V&H PART#
1991-2017	VO2 Grenade Air Intake	70031
1991-2017	VO2 Grenade Air Intake Matte Black	40031
1991-2017	VO2 Grenade Air Intake Gloss Black	40033

FOR CLOSED COURSE COMPETITION USE ONLY.
NOT INTENDED FOR STREET USE.



TWENTY17

R A C E S H O P C O M P O N E N T S



vanceandhines.com

VALVES

Touring • Softail • Dyna

Vance & Hines Raceshop Components are manufactured with state-of-the-art equipment, utilizing stringent quality control procedures to significantly improve all components for prolonged durability and reliability.

Whether building a street performance engine or a drag motor, Vance & Hines valvetrain components are drop-in upgrades providing needed stability while reducing premature wear. All components are made to exacting tolerances ensuring maximized performance.

- Precision CNC Machined From a Stainless One Piece Forging for Higher Strength & Durability
- High Grade Allows Design to Withstand High Heat and Maintain Roundness
- Chrome Coated
- Micro Polished Stem for Smoother Finish and Less Friction Resulting in Improved Performance
- Multi Angle Back Cuts for Enhanced Flow
- 7 Millimeter Stem



VALVE SETS (Contains 2 PCS/ Set)

YEAR	DESCRIPTION	V&H PART#
2005-2017	1.575" STD Exhaust- Stainless (1)	35-4510
2005-2017	1.610" Exhaust- Stainless (+.035) (1)	35-4511
2005-2017	1.630" Exhaust- Stainless (+.055) (1)	35-4512
2005-2017	1.650" Exhaust- Stainless (+.075) (1)	35-4513
2005-2017	1.630" Exhaust- Inconel (+.055) (1)	35-4514
2005-2017	1.805" STD Intake- Stainless (1)	35-4520
2005-2017	1.900" Intake- Stainless (+.095) (1)	35-4521
2005-2017	2.000" Intake Stainless (+.195) (1)	35-4522
2005-2017	1.900" Intake- Stainless Hollow Stem (+.095) (1)	35-4523
2005-2017	2.000" Intake- Stainless Hollow Stem (+.195) (1)	35-4524

(1) Excludes Milwaukee Eight Equipped Models

VALVE KITS (Contains 2 PCS each Valve, Spring, Retainer, Spring Base, Viton Valve Seal & Keeper)

YEAR	DESCRIPTION	V&H PART#
2005-2017	1.805" STD Valve/ Performance Springs (1)	35-4530
2005-2017	1.900" Intake Valve/ Performance Springs (1)	35-4531
2005-2017	2.000" Intake Valve/ Performance Springs (1)	35-4532
2005-2017	1.575" Exhaust Valve/ Performance Springs (1)	35-4540
2005-2017	1.610" Exhaust Valve/ Performance Springs (1)	35-4541
2005-2017	1.630" Exhaust Valve/ Performance Springs (1)	35-4542
2005-2017	1.650" Exhaust Valve/ Performance Springs (1)	35-4543

(1) Excludes Milwaukee Eight Equipped Models

**FOR CLOSED COURSE COMPETITION USE ONLY.
NOT INTENDED FOR STREET USE.**

VALVE SPRINGS

Touring • Softail • Dyna



VALVE SPRINGS

SPECIFICATION		VALUE
Max. Lift:		0.600"
Spring Dia. (Large End):	O.D. 1.445" / I.D. 1.000"	
Spring Dia. (Small End):	O.D. 1.095" / I.D. 0.650"	
Installed Height:		180 lbs @ 1.850"
Open Load:		400 lbs @ 1.250"
Spring Rate:		370 lbs-in
Max Coil Bind:		1.210"

SPRING KIT (Contains 4 PCS of each piece)

YEAR	DESCRIPTION	V&H PART#
2004-2017	Springs, Retainer, Spring Base, Viton Seal, & Keeper (1)(2)	35-4500
<small>(1) Excludes Milwaukee Eight Equipped Models</small>		
<small>(2) Fits 2005-2017 Twin Cam, 2004-2017 Sportster XL & 2009-2013 XR Sportster</small>		

**FOR CLOSED COURSE COMPETITION USE ONLY.
NOT INTENDED FOR STREET USE.**

Vance & Hines Raceshop Components twin cam high-performance beehive spring kits are designed with the latest advancements in valve spring technology. Our springs are nano-peened, polished and 100% inspected through load testing to ensure they exceed stringent quality standards, offering superior valve stability at high RPM range. They are the premium choice for your performance upgrade and are "drop-in" ready. No machining of heads is required.

- Retainers Made From 4140 Chromoly Steel.
- Heat Treated & Processed to Maintain High Strength and Lightweight Design
- Keepers Type FMOD7 Lock Angle 7°, Triple Radius Groove, Standard Install Height
- Equipped with Chromoly Spring Bases
- Kit Comes with Viton Seals Designed for Maximum Retention of Elastic Properties along with Excellent Resistance to Fluids, Heat, and Aging.

vanceandhines
.com

CAMS/LIFTERS/PUSHRODS

Touring • Softail • Dyna

Camshafts

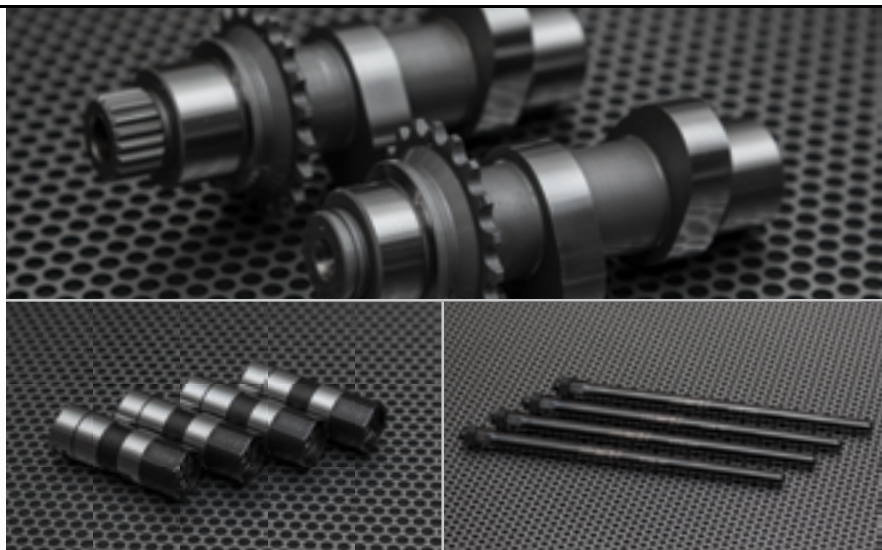
- "Bolt-In" Camshafts
- Features Silent Ramp Profile to Eliminate Valvetrain Noise
- 0.575" lift 240° on Both Intake & Exhaust
- Up to 95+ HP and 105 FT-LBS of Torque in a Stock 103 Engine with Power Duals, OS450 Slip-Ons, VO2 Naked Air Intake, and FP3 Tune

Lifters

- Tighter I.D. Grind Resulting in Substantially Lower Leak Down
- Features "Direct-Shot" Oiling System Sending Oil to Axle and Roller Needle Bearings
- Allows for Use of Higher Spring Pressure and More RPM Capability
- Most Effective when Paired with Vance & Hines Camshafts and Valvetrain Components

Pushrods

- Hardened & Tempered Chromoly
- Specially Developed for Extreme Spring Pressures
- 7/16" x 0.095" Single Taper 5/16" x 24 TPI



CAM SET (Contains camshaft set, chest gasket set, bearings)

YEAR	DESCRIPTION	V&H PART#
2006-2016	Twin Cam Set (1)	35-4551
<small>(1) Fits 2006-2017 Dyna, 2007-2017 Softail, 2007-2016 Touring models</small>		

LIFTER SETS (Contains 2 PCS of each piece)

YEAR	DESCRIPTION	V&H PART#
1999-2017	Twin Cam Lifter Set (1)(2)	35-4553
<small>(1) Fits 2006-2017 Dyna, 2007-2017 Softail, 2007-2016 Touring models (2) Fits 2000-2017 XL Sportster, 2009-2013 XR Sportster</small>		

PUSHRODS (Contains 2 PCS EX pushrod & INT pushrod)

YEAR	DESCRIPTION	V&H PART#
1999-2017	Pushrod Set (3)	35-4552
<small>(3) Excludes Milwaukee Eight Equipped Models</small>		

**FOR CLOSED COURSE COMPETITION USE ONLY.
NOT INTENDED FOR STREET USE.**

GUIDES/SEATS

Touring • Softail • Dyna



Guides

- Cast Iron Guide
- Direct O.E. Replacement (Verify Against O.E. Parts/ May Require Additional Machining)
- Shouldered Guide for Positive Stop
- Designed for Durability and Longevity
- Precision Machined for Concentricity
- Tapered to Prevent Galling During Installation
- 2.018" Overall Length / STD .5620" O.D. / .2750" I.D.
- Intended for use with 7mm Valve Stem
- Can be used for Intake or Exhaust Guide
- Made in the U.S.A.

Seats

- Proprietary Alloy Designed with High-Level Thermal Properties
- Engineered and Tested to Perform Under the Most Extreme Conditions
- Designed for Durability and Longevity
- Excellent Machinability and Wear Resistance
- Kit Available in Either Exhaust or Intake Position
- Intake Dimensions: 2.125" x 1.650" x .475"
- Exhaust Dimensions: 1.750" x 1.325" x .450"
- Made in the U.S.A.

VALVE GUIDES (Sold Individually)

YEAR	DESCRIPTION	V&H PART#
2005-2016	Twin Cam Intake/Exhaust Cast Iron Guide (1)/(2)	35-4508

(1) Fits 2006-2017 Dyna, 2007-2017 Softail, 2007-2016 Touring models

(2) Fits 2000-2017 XL Sportster, 2009-2013 XR Sportster

VALVE SEAT KIT (Contains 2 QTY per Kit)

YEAR	DESCRIPTION	V&H PART#
2005-2016	Intake Valve Seat Kit (1)/(2)	35-4516
2005-2016	Exhaust Valve Seat Kit (1)/(2)	35-4517

(1) Fits 2006-2017 Dyna, 2007-2017 Softail, 2007-2016 Touring models

(2) Fits 2000-2017 XL Sportster, 2009-2013 XR Sportster

FOR CLOSED COURSE COMPETITION USE ONLY.
NOT INTENDED FOR STREET USE.

vanceandhines
.com

PISTONS

Touring • Softail • Dyna

- Forged from 2618 Aluminum
- Moly-Coated Piston Skirts
- High-Strength, Light Weight Chromoly Wrist Pin
- Phosphate Coating to Reduce Micro-Welding and Pin Galling



PISTON KIT (Contains piston set, wrist pin, ring set, pin locks)

YEAR	DESCRIPTION	V&H PART#
1999-2017	Big Bore 107" Piston Set (1)(2)(3)(4)	35-4554
(1) Fits 2007-2016 Dyna models		
(2) Fits 2007-2017 Touring & Softail models		
(3) Fits 1999-2006 Dyna & Touring models equipped with 4-3/8" flywheels		
(4) Fits 200-2006 Softail models equipped with 4-3/8" flywheels		

**FOR CLOSED COURSE COMPETITION USE ONLY.
NOT INTENDED FOR STREET USE.**

LUBRICANTS

V-Twin Engines



MOTOR OIL

YEAR	DESCRIPTION	V&H PART#
All	Synthetic Motor Oil 20W50 - Case (5)	35-4565
All	Synthetic Motor Oil 20W50 - Quart	35-4560

(5) Contains 12 1QT bottles

PRIMARY LUBRICANT

YEAR	DESCRIPTION	V&H PART#
All	Synthetic Primary Lubricant 5W30 - Case (5)	35-4566
All	Synthetic Primary Lubricant 5W30 - Quart	35-4561

(5) Contains 12 1QT bottles

TRANSMISSION FLUID

YEAR	DESCRIPTION	V&H PART#
All	Synthetic Transmission Fluid 75W140 - Case (5)	35-4567
All	Synthetic Transmission Fluid 75W140 - Quart	35-4562

(5) Contains 12 1QT bottles

FOR CLOSED COURSE COMPETITION USE ONLY.
NOT INTENDED FOR STREET USE.

MOTOR OIL

- Formulated with Anti-Wear Characteristics Prolonging Engine Life
- Exceeds All Performance Criteria for Harley-Davidson V-Twin and Metric Motorcycles
- Formulated for Both Air-Cooled and Liquid-Cooled 4-Stroke Engines
- High-Temperature Stability and Superior Viscometric Profile
- Full Synthetic

PRIMARY LUBRICANT

- Designed to Maximize Clutch Performance
- Reduces Wear while Providing Smooth Operation
- Full Synthetic

TRANSMISSION FLUID

- Non Corrosive
- Handles Severe Load
- Maximum Protection for Gears
- Full Synthetic

vanceandhines
.com

HORSEPOWER KIT

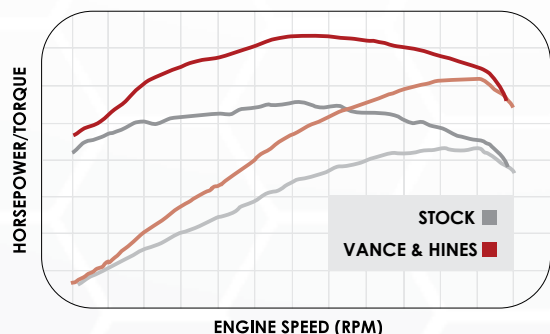
Touring

AVAILABLE IN



From the development team that builds 300 horsepower Pro Stock engines, the Vance & Hines Raceshop introduces Horsepower Kits for Harley-Davidson Touring models. Injecting white-knuckle performance across the entire powerband, the Horsepower Kit is the result of assembling the best selection of bolt-on components, combined with countless hours of tuning on the dyno to yield the best performance gain for a stock big twin engine.

- 575 High-Performance Camshaft Set
- OS450 Slip-Ons with Carbon Fiber End Caps
- Power Duals Head Pipes
- VO2 Drak Carbon Air Intake Kit
- Fuelpak FP3 with Raceshop Mapping
- Adjustable Pushrods
- Custom Billet Timing Cover



* Performed on stock 2013 Harley-Davidson Street Glide with 103 ci engine. Results may vary.



TOURING

YEAR	DESCRIPTION	V&H PART#
2014-2016	Horsepower Kit	35-4572
2014-2016	Horsepower Kit Black	35-4573
2009-2013	Horsepower Kit	35-4570
2009-2013	Horsepower Kit Black	35-4571

FOR CLOSED COURSE COMPETITION USE ONLY. NOT INTENDED FOR STREET USE.

BAFFLES & INSERTS

Touring • Softail • Dyna • Sportster • V-Rod • Street

QUIET BAFFLES & INSERTS

YEAR	DESCRIPTION	V&H PART#
ALL	Oversized 450	21884
ALL	Big Shots Staggered	21301
ALL	Big Shots Long	21301
ALL	Big Shot Duals	21301
ALL	Straightshots HS Slip-Ons	21301
ALL	Longshots HS	21301
ALL	Sideshots	21301
ALL	Shortshots Staggered	21301
ALL	Hi-Output Grenades (Softail/Dyna)	21863
ALL	Hi-Output Grenades (Sportster)	21886
ALL	Twin Slash 3-Inch Slip-Ons	21899
ALL	Fishtail 3-Inch Slip-Ons	21899
ALL	Pro Pipe	21906
ALL	Hi-Output Slip-Ons	21905
ALL	Hi-Output Slip-Ons Carbon	21905
ALL	Twin Slash Round Slip-Ons	21892
ALL	Blackout Round Slip-Ons	21892
ALL	Blackout Round 2-into-1	21892
ALL	Switchback Twin Slash Duals	21892
ALL	Twin Slash Oval Slip-Ons	21911
ALL	Widow XR1200 2-1-2	21929
ALL	Big Radius 2-into-2 (1)	23081
ALL	Competition Series 2-Into-1	7-60093
ALL	Competition Series Slip-Ons (2)	7-60093

(1) Does not fit Sportster applications (2) Requires QTY 2

COMPETITION BAFFLES

YEAR	DESCRIPTION	V&H PART#
ALL	Twin Slash 3-Inch Slip-Ons	21897
ALL	Fishtail 3-Inch Slip-Ons	21897
ALL	Pro Pipe HS	21389
ALL	Pro Pipe	26529

FOR CLOSED COURSE COMPETITION USE ONLY.
NOT INTENDED FOR STREET USE.

For those who want the look but not necessarily all the sound, Vance & Hines offers quiet baffles & inserts to allow the sound to be customized to taste.

- Quiet Baffles Reduce Sound 2-3 Decibels
- Competition Baffles Increase Performance
- Many Available Applications
- Sold Individually



vanceandhines
.com

ACCESSORIES

Touring • Softail • Dyna • Sportster • V-Rod • Street

With the Vance & Hines Header Wrap Kit, give any exhaust system a whole new look, from old school chopper to drag bike.

- Two Laser Cut Clamps
- Six Locking Stainless Steel Ties
- 25-foot Black Wrap Tape Roll
- Wraps Two Headers Thoroughly



Header Wrap Kit



O2 Sensor Plug Kit



Intake Rain Sock



HEADER WRAP KIT

YEAR	DESCRIPTION	V&H PART#
ALL	Black	26523

HEAT SHIELD KITS

YEAR	DESCRIPTION	V&H PART#
1999-2013	Pro Pipe Hi-Output Black (Touring)	60013
2006-2011	Pro Pipe Hi-Output Black (Dyna)	60019

ENDCAP KITS

YEAR	DESCRIPTION	V&H PART#
ALL	Fishtail Endcap (3)	16923
ALL	Slash-Cut Endcap (4)	16921

(3) Fits Softail Duals and Big Shot Duals (4) Fits Softail Duals, Big Shot Duals, Big Shots Long

OXYGEN SENSOR PLUGS

YEAR	DESCRIPTION	V&H PART#
ALL	Oxygen Sensor Plug Kit (18mm)	16925
ALL	Oxygen Sensor Plug Kit (12mm)	16935

VO2 90 RAIN SOCK

YEAR	DESCRIPTION	V&H PART#
ALL	VO2 90 Air Intake Rain Sock	22928

FOR CLOSED COURSE COMPETITION USE ONLY.
NOT INTENDED FOR STREET USE.

FOLLOW US



@VANCEANDHINES



WORKMANSHIP WARRANTY

ALL VANCE & HINES PRODUCTS ARE WARRANTED AGAINST DEFECTS IN MATERIAL AND WORKMANSHIP FOR A PERIOD OF 1 YEAR. THIS WARRANTY DOES NOT COVER DISCOLORATION OR RUST. THIS WARRANTY SHALL BE LIMITED TO THE REPAIR OR REPLACEMENT OF THE PRODUCT, WHICH MAY BE PROVEN DEFECTIVE UNDER NORMAL USE. VANCE & HINES WILL NOT WARRANTY ANY SYSTEM THAT HAS BEEN ABUSED, MISUSED, IMPROPERLY INSTALLED OR MODIFIED.

DEALERS OR DISTRIBUTORS ARE NOT AUTHORIZED TO MAKE DISPOSITIONS BINDING UPON VANCE & HINES. VANCE & HINES WILL NOT BE RESPONSIBLE FOR ANY LABOR CHARGES INCURRED IN REMOVING OR REPLACING ANY SYSTEM UNDER WARRANTY. A RETURN AUTHORIZATION NUMBER AND A COPY OF THE ORIGINAL PURCHASE INVOICE MUST ACCOMPANY ALL RETURNS. PARTS RETURNED WITHOUT A RETURN AUTHORIZATION MAY BE REFUSED.

vanceandhines
.com



13861 Rosecrans Ave, Santa Fe Springs, CA 90670
800.592.2529 | info@vanceandhines.com
vanceandhines.com | facebook.com/vanceandhines

FOR CLOSED COURSE COMPETITION USE ONLY. NOT INTENDED FOR STREET USE.